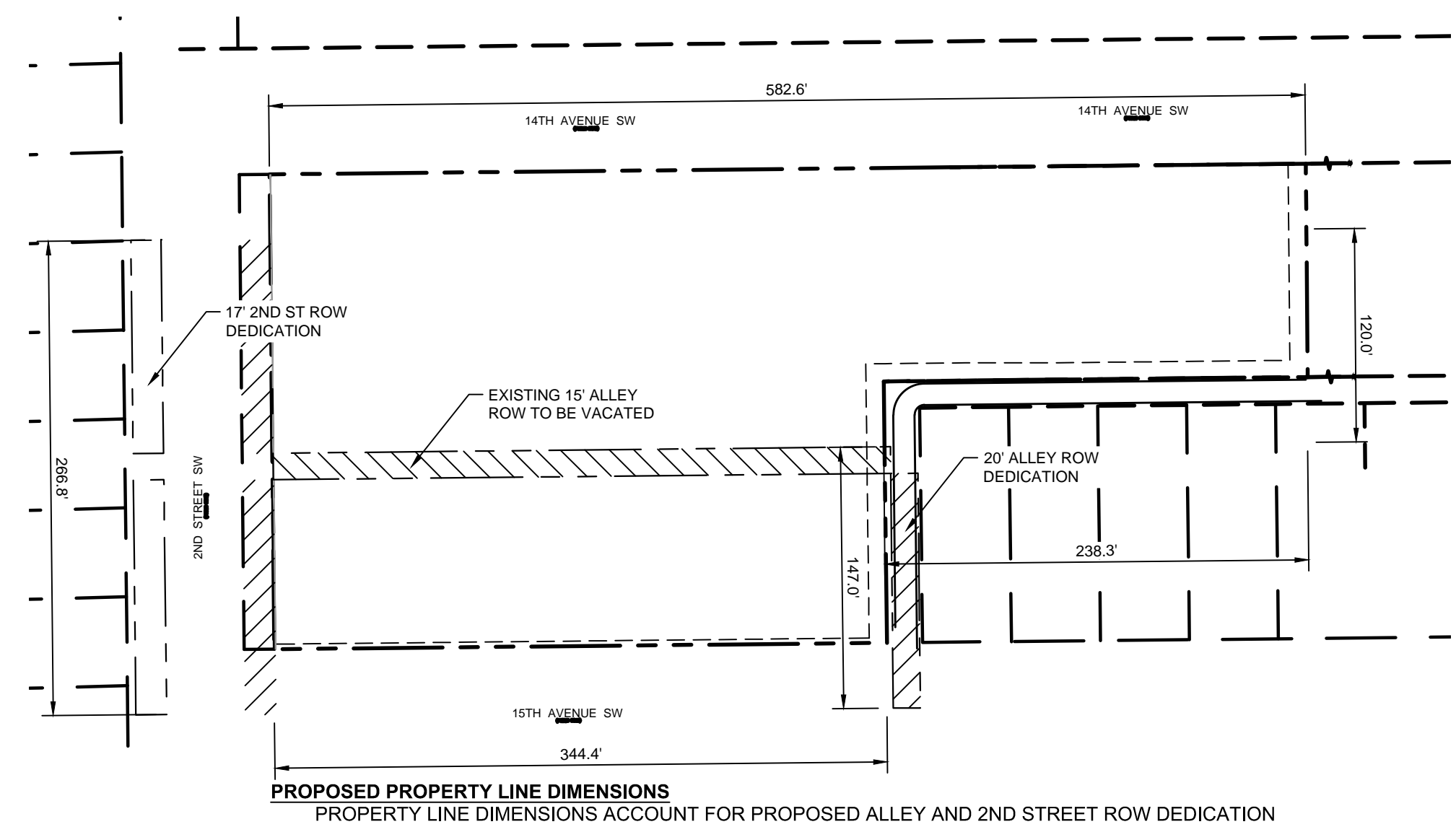


2ND ST. ROW IMPROVEMENTS TO BE COORDINATED WITH ROCHESTER CAPITAL IMPROVEMENT PROJECT

EXISTING 2ND STREET CURBLINE

EXISTING 2ND STREET ROW

PROPOSED TEMPORARY TRAFFIC SIGNAL



LEGAL DESCRIPTION

TRACT A:
PARCEL 1: THE NORTH 131 FEET OF OUTLOT 1, HAMMER & FANNINGS ADDITION TO THE CITY OF ROCHESTER, ACCORDING TO THE RECORDED PLAT THEREOF, OLMSTED COUNTY, MINNESOTA.
PARCEL 2: LOTS 6, 7 AND 8, BLOCK 1, FLATHERS ADDITION TO ROCHESTER, MINNESOTA, ACCORDING TO THE RECORDED PLAT THEREOF, OLMSTED COUNTY, MINNESOTA.
PARCEL 3: LOT ONE (1), BLONDELL'S FIRST SUBDIVISION, ACCORDING TO THE RECORDED PLAT THEREOF, OLMSTED COUNTY, MINNESOTA.

TRACT B:
LOT ONE (1), BLOCK TWO (2), HAMMER AND FANNING'S ADDITION TO THE CITY OF ROCHESTER, ACCORDING TO THE RECORDED PLAT THEREOF, OLMSTED COUNTY, MINNESOTA.

TRACT C:
THE NORTH 50 FEET OF THE SOUTH 100 FEET OF OUTLOT 1, HAMMER AND FANNING'S ADDITION TO THE CITY OF ROCHESTER, ACCORDING TO THE RECORDED PLAT THEREOF, OLMSTED COUNTY, MINNESOTA.

TRACT D:
LOTS 9, 10, 11 AND 12, BLOCK 1, FLATHERS ADDITION TO ROCHESTER MINNESOTA, ACCORDING TO THE RECORDED PLAT THEREOF, OLMSTED COUNTY, MINNESOTA.

TRACT E:
THE SOUTH 50 FEET OF OUTLOT 1 HAMMER AND FANNING'S ADDITION TO THE CITY OF ROCHESTER, ACCORDING TO THE RECORDED PLAT THEREOF, OLMSTED COUNTY, MINNESOTA.

TRACT F:
LOT TWO (2), BLOCK TWO (2), HAMMER AND FANNING'S ADDITION TO THE CITY OF ROCHESTER, ACCORDING TO THE RECORDED PLAT THEREOF, OLMSTED COUNTY, MINNESOTA.

TRACT G:
LOT 3, BLOCK 2, HAMMER AND FANNING'S ADDITION TO THE CITY OF ROCHESTER, ACCORDING TO THE RECORDED PLAT THEREOF, OLMSTED COUNTY, MINNESOTA.

CITY REVIEW

ORIGINAL ISSUE: 08/18/2017

REVISIONS

No.	Description	Date

160871000
PROJECT NUMBER

KHA KHA
DRAWN BY CHECKED BY
KEY PLAN

2nd Street Mixed-Use Development

SITE PLAN

C3.0

