



# ROCHESTER

— *Minnesota* —



FOR IMMEDIATE RELEASE  
September 13, 2018

PUBLIC WORKS DEPARTMENT  
201 4<sup>th</sup> Street SE, Room 108  
Rochester, MN 55904-3740  
(507) 328-2400  
FAX (507) 328-2401

## NEWS RELEASE

### 18<sup>th</sup> Avenue NW Reconstruction Project Update

Contact: Megan Moeller  
Public Works Communications Coordinator  
507-328-2436 or [mmoeller@rochestermn.gov](mailto:mmoeller@rochestermn.gov)

Dillon Dombrovski  
Public Works Construction Project Manager  
507-328-2421 or [ddombrovski@rochestermn.gov](mailto:ddombrovski@rochestermn.gov)

On Saturday, September 15, 2018 the next phase of construction on the 18<sup>th</sup> Avenue will begin. The following traffic flow changes are to be expected starting on Saturday, September 15:

- **The intersection of 18<sup>th</sup> Avenue NW and 41<sup>st</sup> Street NW will re-open to traffic.**
- **18<sup>th</sup> Avenue NW will be closed from the 48<sup>th</sup> Street NW Roundabout south to the Rochester Assembly Church south entrance.**  
This section of the roadway is being completely closed to through traffic in order to accommodate the replacement of underground utilities within the street.
- **18<sup>th</sup> Avenue NW will remain closed to through traffic from 37<sup>th</sup> Street NW to 41<sup>st</sup> Street NW.**  
Lane restrictions, lane shifting, and uneven road surfaces are to be expected while this section of 18<sup>th</sup> Avenue NW is under construction.

The posted detour will route traffic along West River Parkway NW from 37<sup>th</sup> Street NW to 55<sup>th</sup> Street NW, similar to what was in place earlier this year.

#### Project Timeline

The project will continue throughout the fall months with an anticipated completion date of November 13, 2018. This project will have a major impact on those who travel this corridor, with road closures being the most common impact. The official detour route is along West River Parkway past Essex Park and the Watson soccer fields. Bus riders should pay close attention to changes that may be posted at bus stops in the vicinity of this project.

#### Project Benefits

18<sup>th</sup> Avenue NW, also known as County Road (CR) 112, provides a critical connection in the growing northwest corner of Rochester. As the community has grown north to 55<sup>th</sup> Street NW and beyond, the traffic on 18<sup>th</sup> Avenue NW has also increased. The goal of this project is to reconstruct 18<sup>th</sup> Avenue NW to improve the function and safety of the roadway for pedestrians, bicycles, transit and vehicles while better serving the surrounding urbanizing land uses. The proposed project includes reconstruction of 18<sup>th</sup> Avenue NW (CR 112) from 37<sup>th</sup> Street NW to 55<sup>th</sup> Street NW. The project will replace deteriorated pavement, replace existing signal systems, address aging sanitary sewer and water main utilities, provide pedestrian enhancements, improve the storm drainage system, construct an urban section with a mini roundabout, add bike lanes, and add landscaped medians for access management improvements.

For more information on the project planning and design that led to this construction project, please visit

<https://www.bolton-menk.com/clients/rochester/index.html>

<http://www.rochestermn.gov/departments/public-works/construction-projects/current-projects>

Pedestrians and drivers are advised to use caution while traveling around and through all construction zones. The cooperation and patience of the public is greatly appreciated during construction. You can also assist by keeping children away from the work zone.

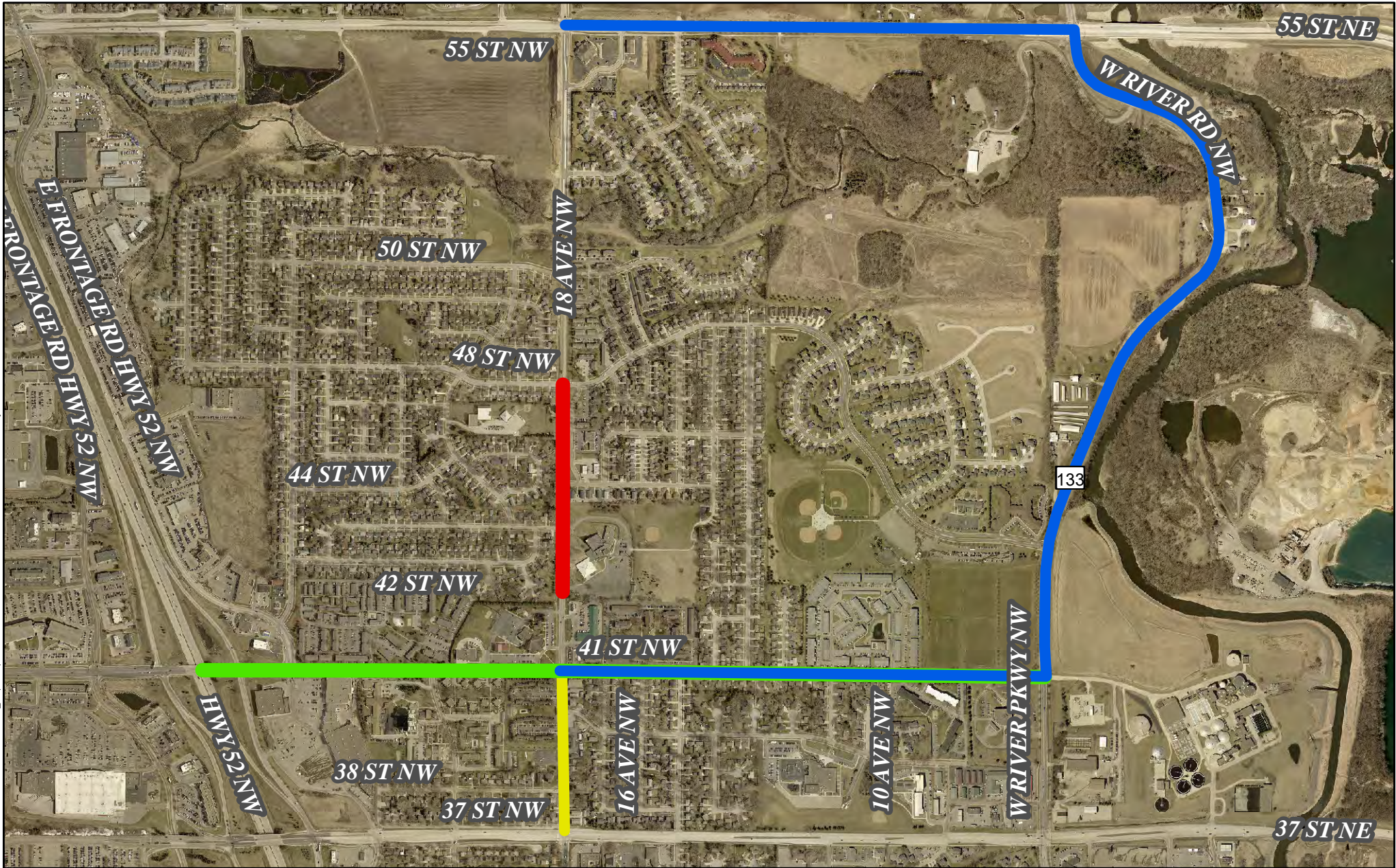
###

An electronic version of this News Release is available at: <http://www.rochestermn.gov/departments/public-works>

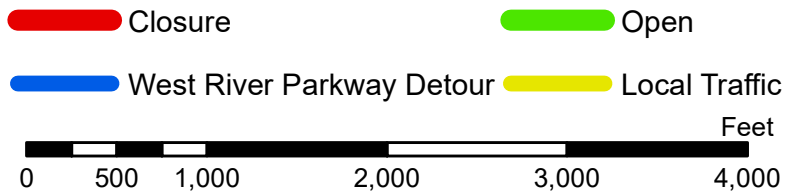
Follow us on Facebook: @RochesterMNPublicWorksDepartment



# 18th Avenue NW Reconstruction Project Update



Background: 2018 imagery from Pictometry Intl.



**Project Timeline: 9/15/2018 to 11/13/2018**

Data contained has not been field verified and should be used as reference only. It is the user's responsibility for field verifying elevations, locations, dimensions, etc. to conduct detailed design.

The City of Rochester specifically disclaims all warranties, express or implied, including but not limited to implied warranties of fitness for a particular purpose, with respect to the information contained on this map. The City of Rochester shall have no liability with respect to any loss or damage directly or indirectly arising out of the use of this data.

Document Path: P:\MAPPING\GIS\PSA\_Map\Maps\2018\2018\20180915\_18th Avenue NW Reconstruction Project.mxd Date Saved: 9/12/2018 2:50:23 PM