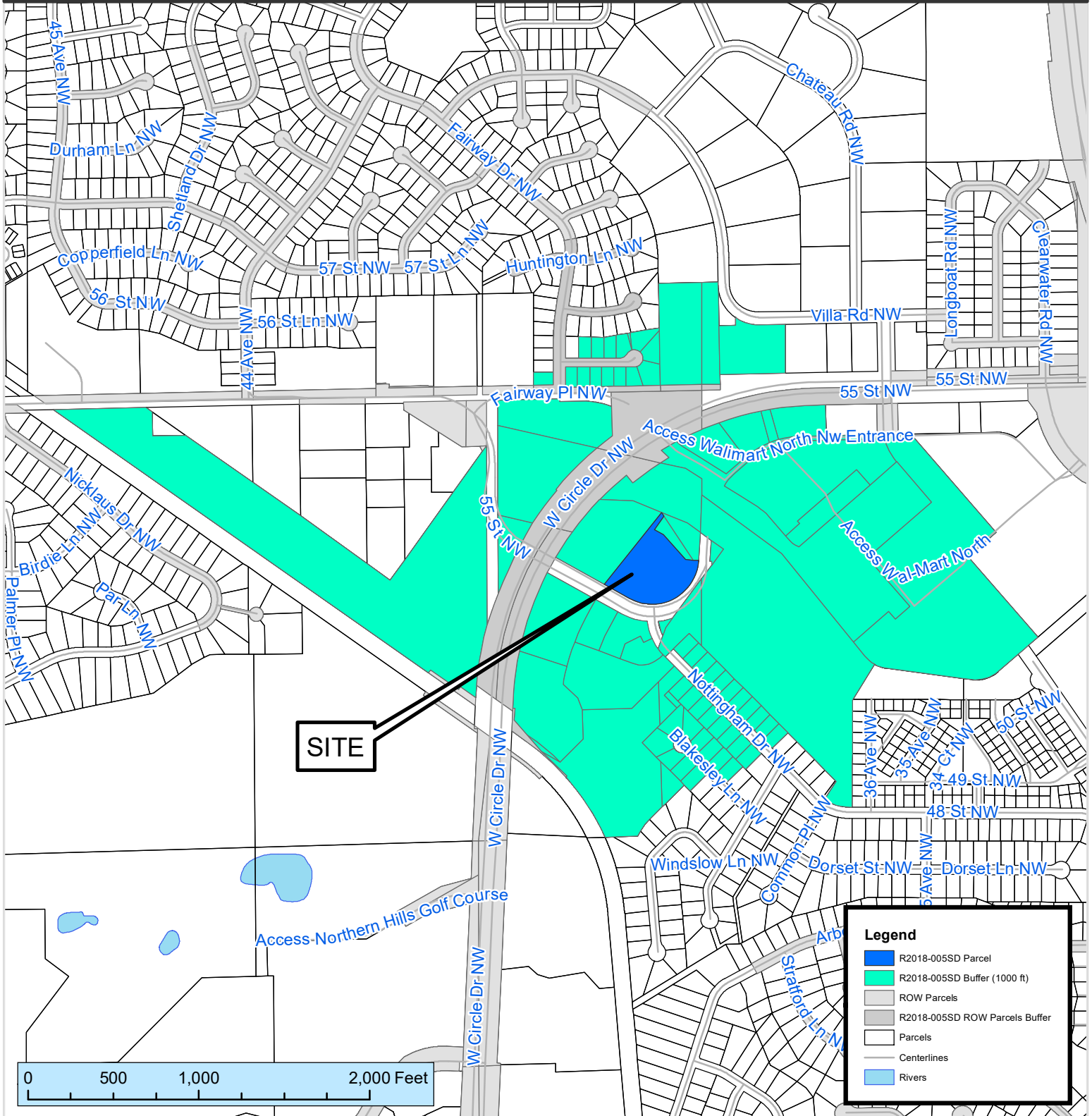


1000 ft. Notification Area of

Project Development Plan Amendment #R2018-005SD in the Arboretum Special District by Tailwind Rochester LLC. The applicant is proposing to amend the Project Development Plan for the site to allow for a medical office where retail, restaurant, and office uses were previously approved. The project development plan site is located at the northeast and southeast corners of the intersection of West Circle Drive NW and Members Parkway NW.

City Council Ward: 3 - Nick Campion



This map prepared by the GIS Division, Rochester-Olmsted County Planning Department. Olmsted County is not responsible for omissions or errors contained herein. If discrepancies are found within this map, please notify the GIS Division, Rochester-Olmsted County Planning Department, 2122 Campus Drive SE Rochester MN 55904 (507) 328-7100.