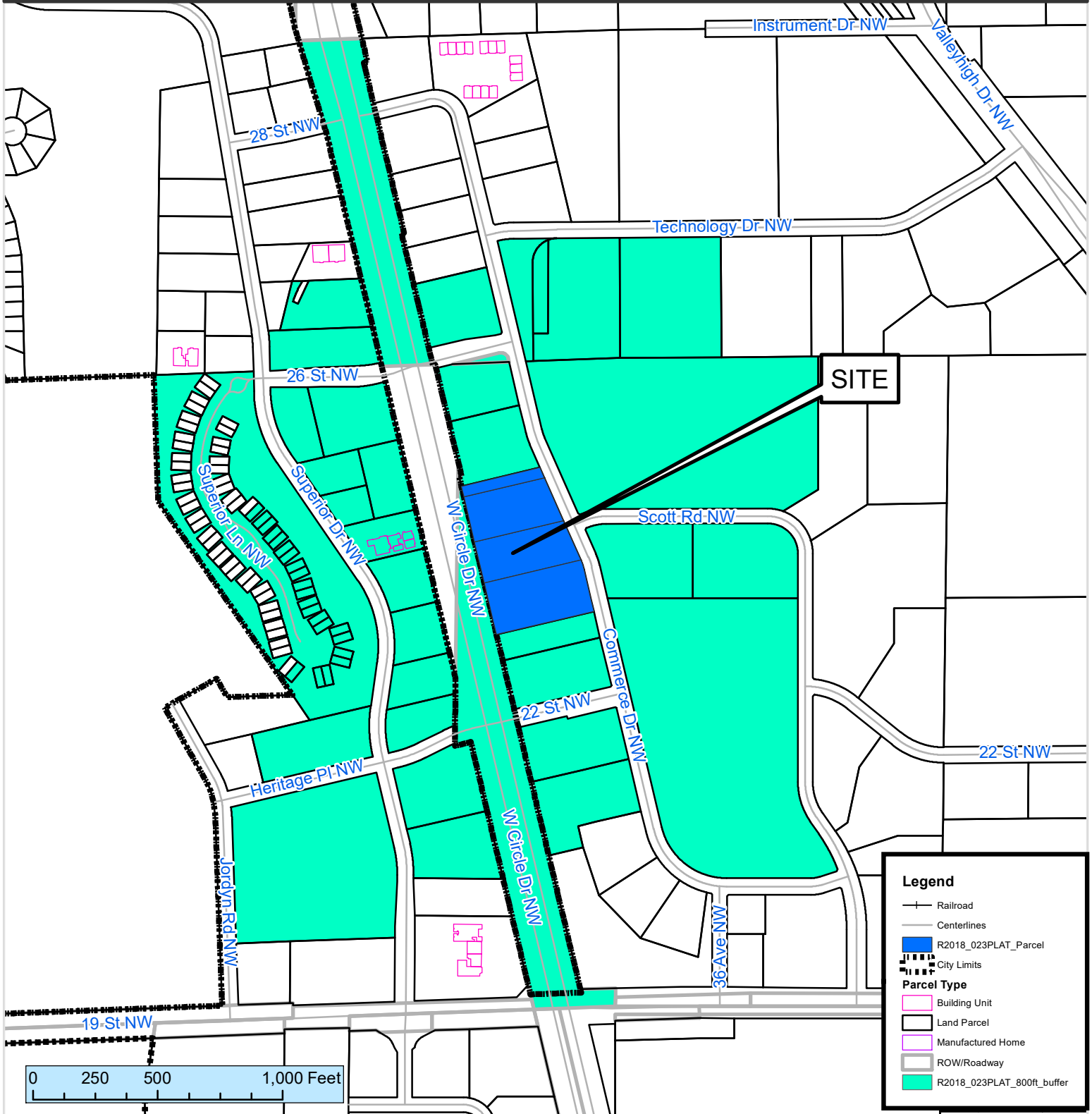


### 800 ft. Notification Area of

Final Plat #R2018-023PLAT to be known as Northwest Commercial Center Eighth. The final plat would create four commercial lots on 5.25 acres. The site is located east of West Circle Drive NW, west of Commerce Drive NW, north of 22nd Street NW, and south of 26th Street NW.

City Council Ward: 6 - Annalissa Johnson



This map prepared by the GIS Division, Rochester-Olmsted County Planning Department. Olmsted County is not responsible for omissions or errors contained herein. If discrepancies are found within this map, please notify the GIS Division, Rochester-Olmsted County Planning Department, 2122 Campus Drive SE Rochester MN 55904 (507) 328-7100.

Map Date: 12/18/2018

