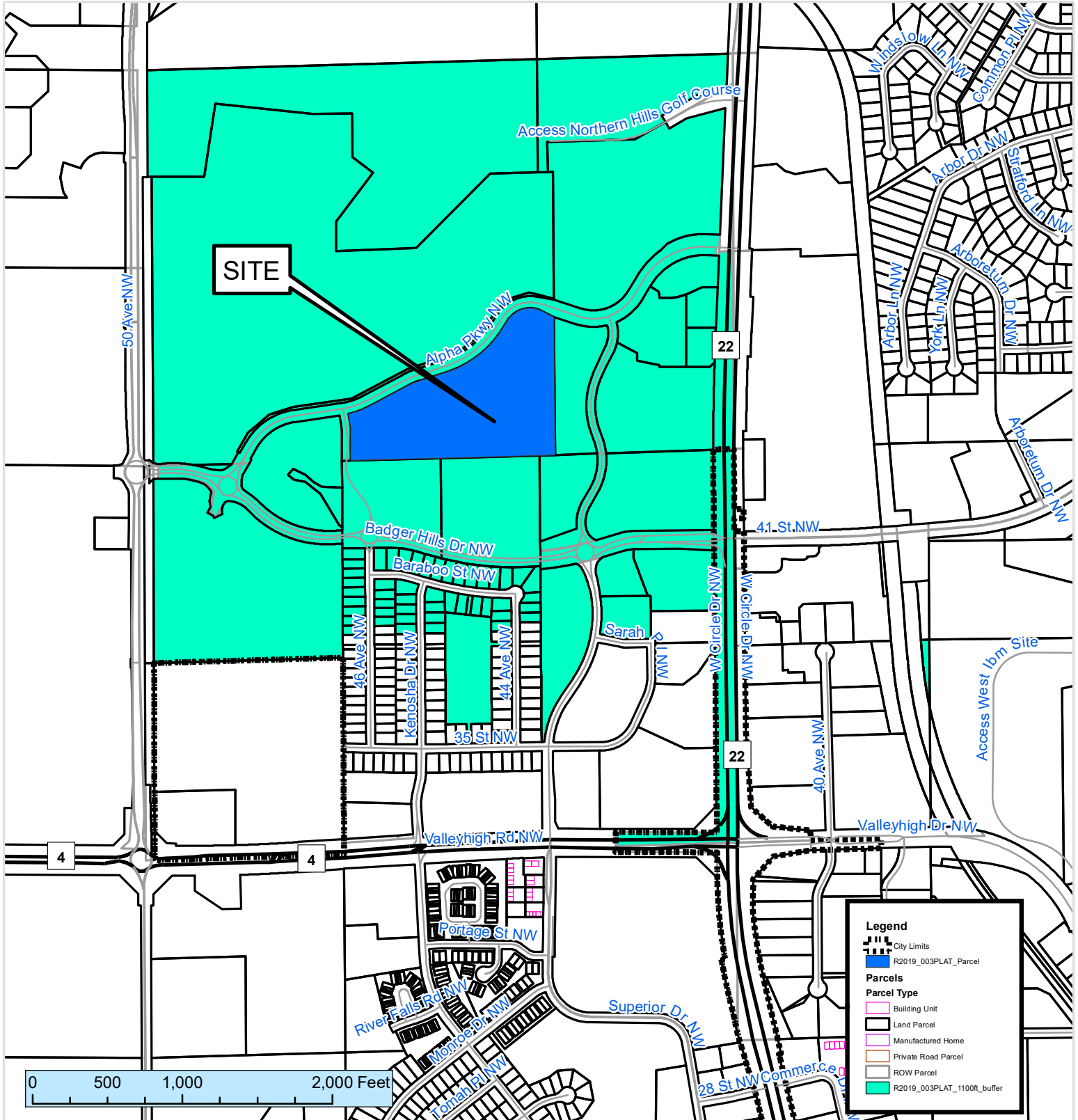


1100 ft. Notification Area of

Final Plat #R2019-003PLAT by Village Capital Corporation, to be known as Bella Grove Subdivision. The final plat would create two lots on 20 acres. The site is located south of Alpha Parkway NW, directly east of 46th Avenue NW.

City Council Ward: 3 - Nick Campion



This map prepared by the GIS Division, Rochester-Olmsted County Planning Department. Olmsted County is not responsible for omissions or errors contained herein. If discrepancies are found within this map, please notify the GIS Division, Rochester-Olmsted County Planning Department, 2122 Campus Drive SE Rochester MN 55904 (507) 328-7100.