

March 4, 2019  
1080R0029.007  
PO

## EXHIBIT A

### UTILITY EASEMENT VACATION DESCRIPTION

Part of a 32.00 feet wide utility easement, over and across Lot 1 and 2 of Block 2, NORTH STAR BUSINESS PARK, according to the plat thereof on file at the County Recorder's office, Olmsted County, Minnesota, said part being 22.00 feet to the right and 10.00 feet to the left of the following the alignment line:

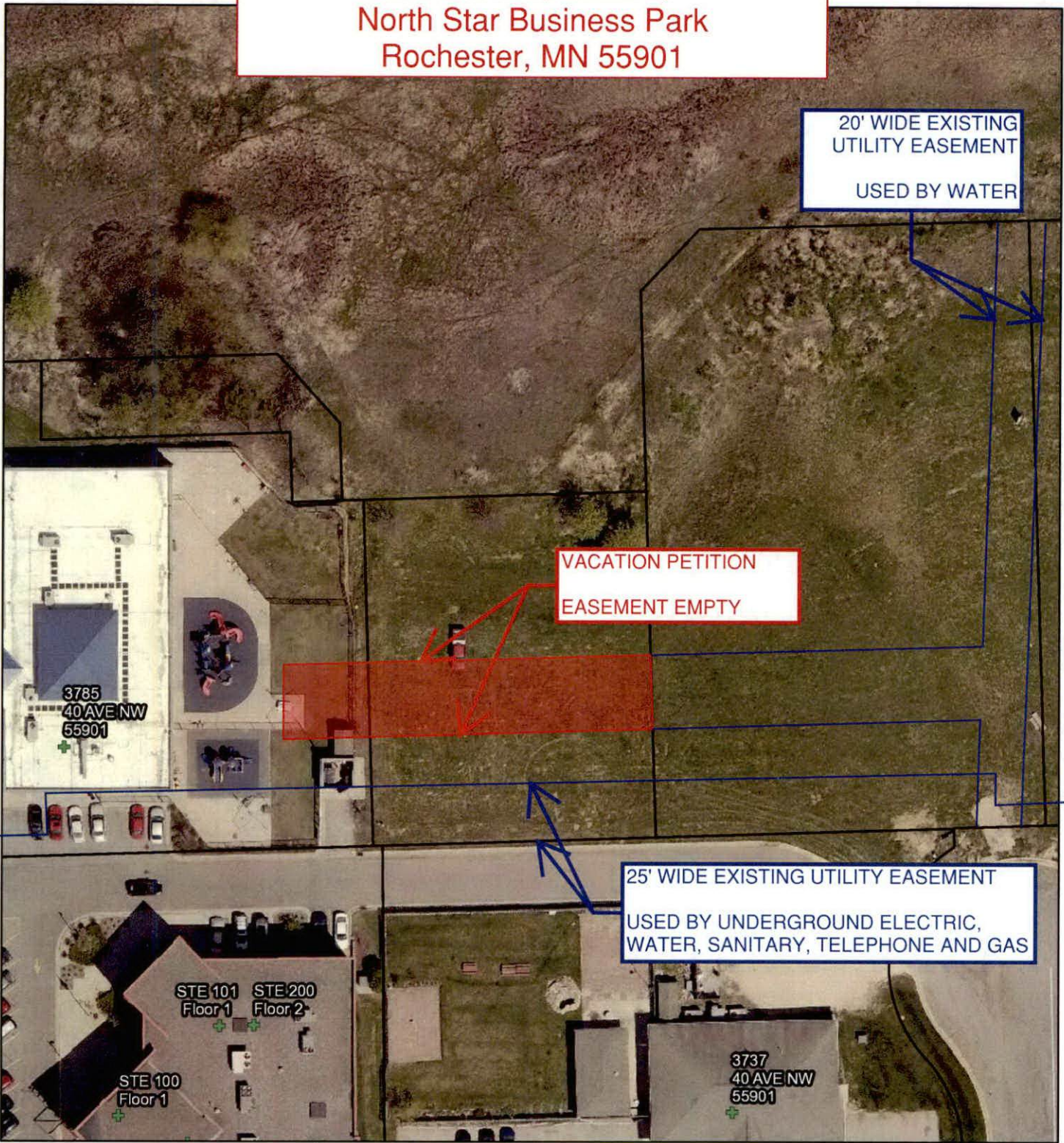
Commencing at the southeast corner of said Lot 1; thence on an assumed bearing of North 02 degrees 34 minutes 23 seconds West along the east line of said Lot 1 a distance of 69.00 feet to the alignment line of said 32.00 feet wide utility easement; thence South 87 degrees 25 minutes 37 seconds West along said alignment line a distance of 5.60 feet to the point of beginning of said alignment line; thence reverse North 87 degrees 25 minutes 37 seconds East along said alignment line a distance of 160.66 feet to the east line of said Lot 2 and there terminating.

The sidelines of said easement to terminate at the east line of said Lot 2.





**EASEMENT VACATION EXHIBIT MAP**  
 Lot 1 and 2, Block 2,  
 North Star Business Park  
 Rochester, MN 55901



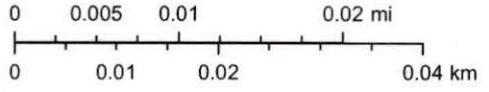
February 4, 2019

1:741

**Centerlines**

- <all other values>
- City Street
- County Road
- County State Aid Highway
- Driveway With No Public Access
- Interstate

- Municipal State Aid Street
- Private Road With Public Access
- State or Trunk Highway
- Township Road
- US Highway
- Public Land Corners
- E911 Addresses



Rochester - Olmsted Planning Department

RECEIVED  
MAR 15 2019

Rochester-Olmsted County Planning Dept. GIS Division, Rochester Public Utilities and Rochester Public Works Dept.  
 Rochester-Olmsted County Planning Dept. GIS Division.  
 Rochester-Olmsted County GIS