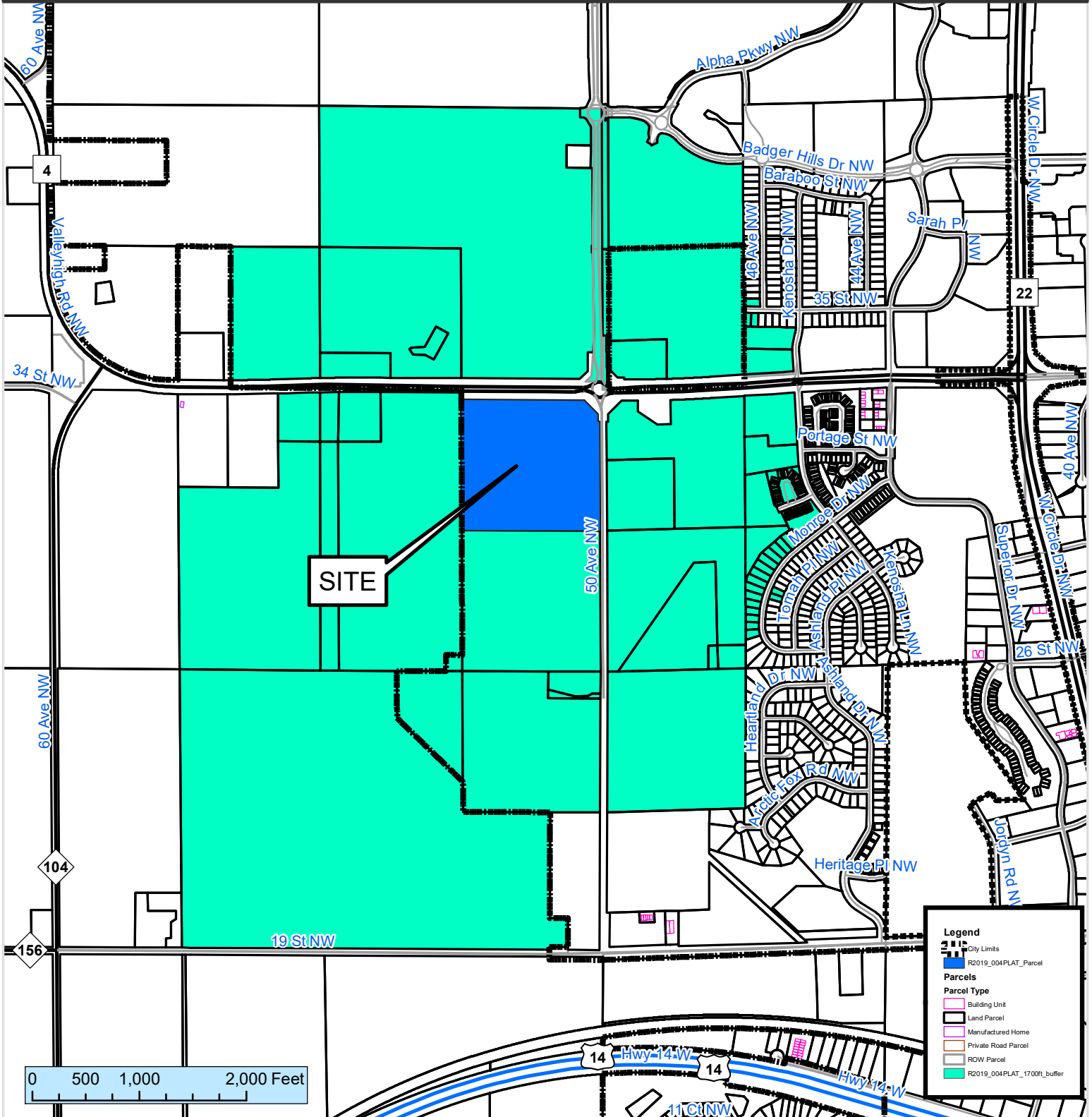


1700 ft. Notification Area of

Final Plat #R2019-004PLAT by Valleyhigh Business Park, LLC, to be known as Valleyhigh Business Park. The final plat would create one outlot and one lot on 40 acres. The site is located south of Valleyhigh Drive and west of 50th Avenue NW.

City Council Ward: 3 - Nick Campion



This map prepared by the GIS Division, Rochester-Olmsted County Planning Department. Olmsted County is not responsible for omissions or errors contained herein. If discrepancies are found within this map, please notify the GIS Division, Rochester-Olmsted County Planning Department, 2122 Campus Drive SE Rochester MN 55904 (507) 328-7100.