

## Baihly Woods Stormwater Management Improvements (J6662)

Construction is anticipated to start in September 2019 and be completed in May 2020.

This project will eliminate erosion within the ravine (drainage easement) by conveying stormwater to the dry detention basin via storm sewer, (2) maintain the flood storage capacity within the dry detention basin, (3) improve water quality, and (4) reduce required maintenance by City staff at this location and downstream stormwater management facilities.

### Project Benefits

City Pond No. 4 and connected storm sewer infrastructure were constructed in 1989 for rate control and stormwater conveyance, respectively, as part of the Baihly Woodland 8th Subdivision. Two storm sewer outfalls in intersection of Baihly Hills Drive SW and Baihly Summit Drive SW drain stormwater from the roadway and residential development to City Pond No. 4 via an open channel that has severely eroded over time.

Erosion has occurred between the storm sewer outfall and pond because of increased stormwater volumes due to development within the watershed and stormwater traveling over a steep slope composed of highly erodible soils with no vegetation due to the heavy tree canopy. Because the eroded channel material accumulates in the dry detention basin, this infrastructure has required extensive maintenance three times since 2005, i.e. the eroded channel material has been removed three times. Maintenance is required again for proper function and the prevention of further damage due to overtopping of the berm during large rainfall events.

This project will consist of installing storm sewer within an existing drainage easement that will connect the outlet of the existing storm sewer outfalls located in the southeast quadrant of the intersection of Baihly Hills Drive SW and Baihly Summit Drive SW and a downstream dry detention basin. Inspection of the two storm sewer outfalls has also revealed that several upstream pipe segments will need to be replaced due to corrosion of the corrugated metal pipe (CMP) storm sewer. The project will also include restoration of eroded areas within and/or adjacent to the existing easement.

### Project Cost and Funding

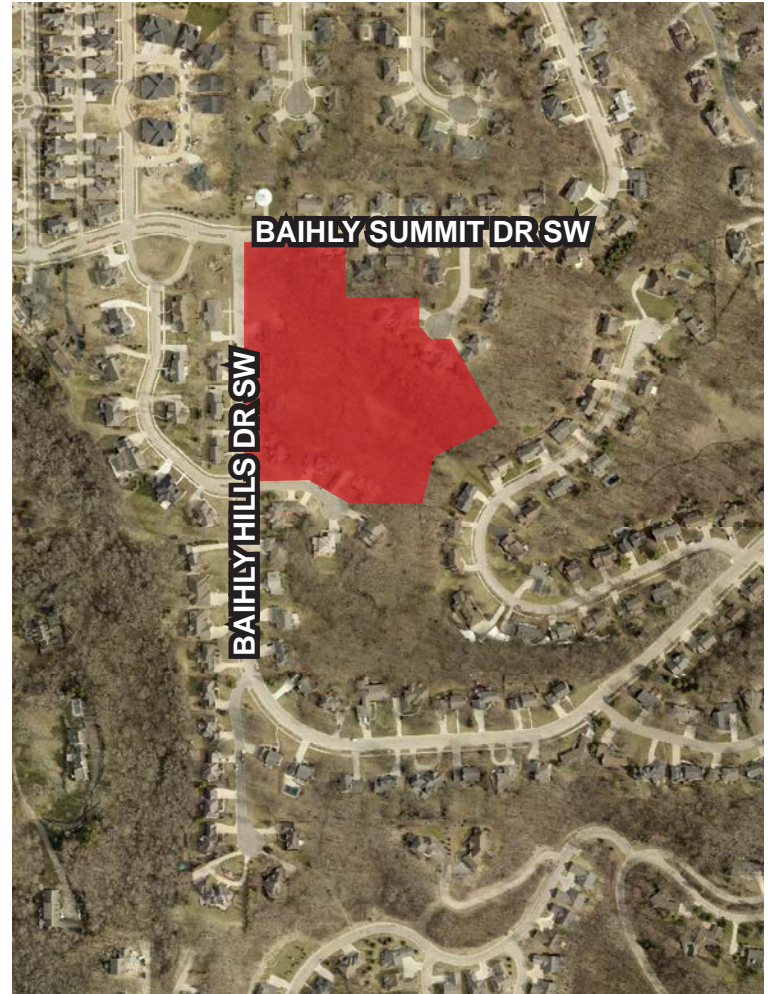
The estimated project cost is \$110,000 with funding coming from the Storm Water Utility reserve.

### Project Contacts

Troy Erickson, Project Manager  
507-328-2419 • [terickson@rochestermn.gov](mailto:terickson@rochestermn.gov)

Brian Monosmith, Construction Inspector  
507-328-2447 • [bmonosmith@rochestermn.gov](mailto:bmonosmith@rochestermn.gov)

### Project Location



### Construction Impacts

Impacts to vehicle traffic:

- Minor traffic impacts are anticipated along Baihly Hills Drive SW and Baihly Summit Drive SW which serve as the primary access routes to the construction project. The contractor will be required to maintain access on both streets throughout construction.