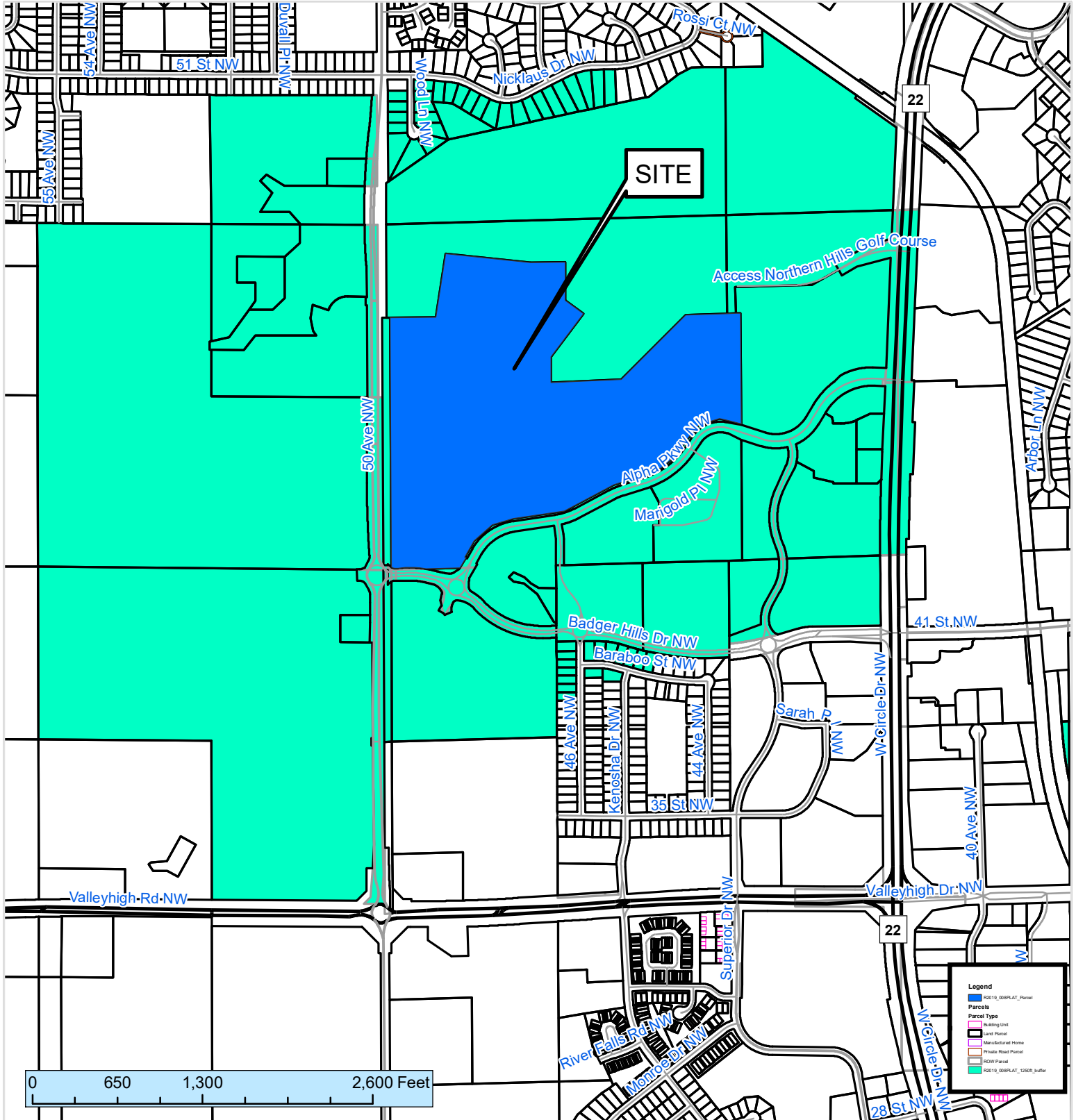


1250 ft. Notification Area of

Final Plat #R2019-008PLAT by Regency Consolidated Residential LLC, to be known as Alpha Second Subdivision. The final plat would create one lot and three outlots on 52 acres. The site is located on the north side of Alpha Parkway NW and east of 50th Avenue NW.

City Council Ward: 3 - Nick Campion



This map prepared by the GIS Division, Rochester-Olmsted County Planning Department. Olmsted County is not responsible for omissions or errors contained herein. If discrepancies are found within this map, please notify the GIS Division, Rochester-Olmsted County Planning Department, 2122 Campus Drive SE Rochester MN 55904 (507) 328-7100.