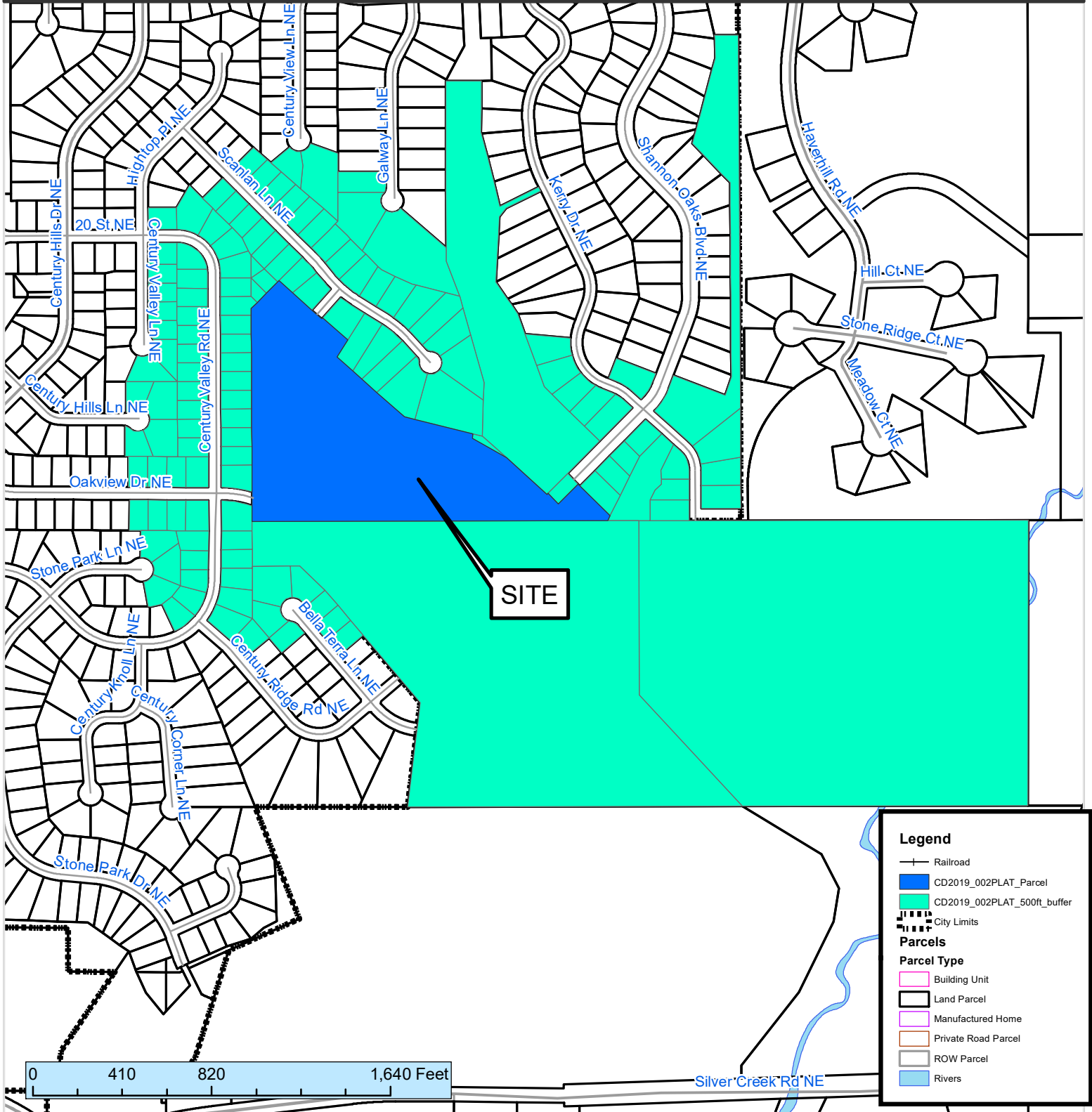


500 ft. Notification Area of

Preliminary Plat CD2019-002PLAT by Oak Ventures of Rochester, LLC to be known as "The Neighborhood of Shannon Oaks", consisting of 22 residential lots and 3 outlots on 9.72 acres within an R-1 Zone District. The subject site is located at the south terminus of Shannon Oaks BLVD NE, approximately 450 feet south west of the intersction of Kerry LN NE and Shannon Oaks BLVD NE. (PIN 73.29.32.082847)

City Council Ward: 5 - Shaun Palmer



This map prepared by the GIS Division, Rochester-Olmsted County Planning Department. Olmsted County is not responsible for omissions or errors contained herein. If discrepancies are found within this map, please notify the GIS Division, Rochester-Olmsted County Planning Department, 2122 Campus Drive SE Rochester MN 55904 (507) 328-7100.

Map Date: 07/22/2019

