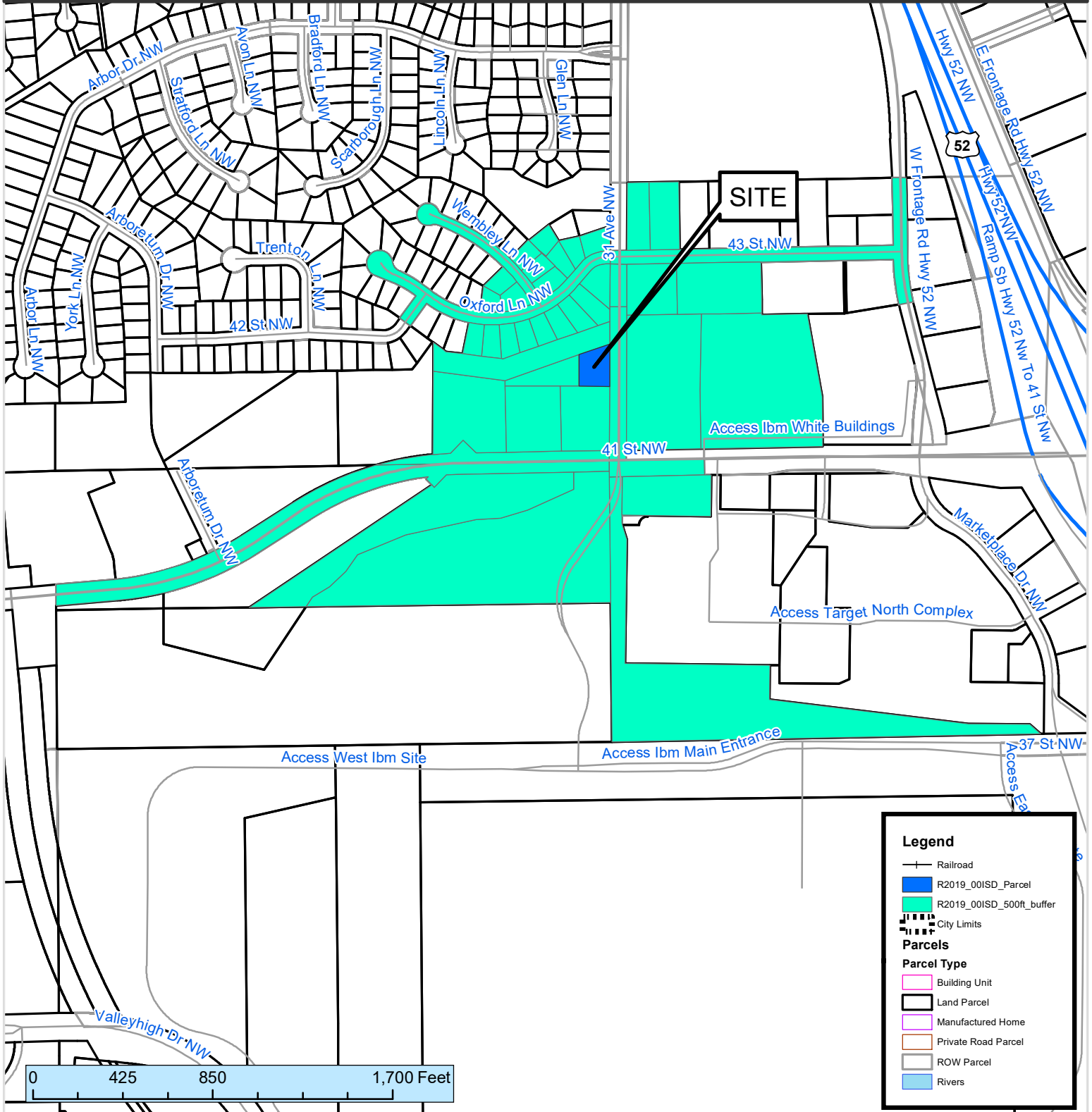


500 ft. Notification Area of

Special District Amendment #R 2019-00ISD to the Arboretum Special District by Joe and Gina Jewison. The applicant is proposing to amend the Project Development Plan for the site to allow Retail, Office and Personal Service Uses where only office was previously approved. The project development plan site is located in the southeast corner of the district directly abutting 31st Avenue NW to the east.

City Council Ward: 3 - Campion, 6 - Johnson



This map prepared by the GIS Division, Rochester-Olmsted County Planning Department. Olmsted County is not responsible for omissions or errors contained herein. If discrepancies are found within this map, please notify the GIS Division, Rochester-Olmsted County Planning Department, 2122 Campus Drive SE Rochester MN 55904 (507) 328-7100.

Map Date: 07/08/2019

