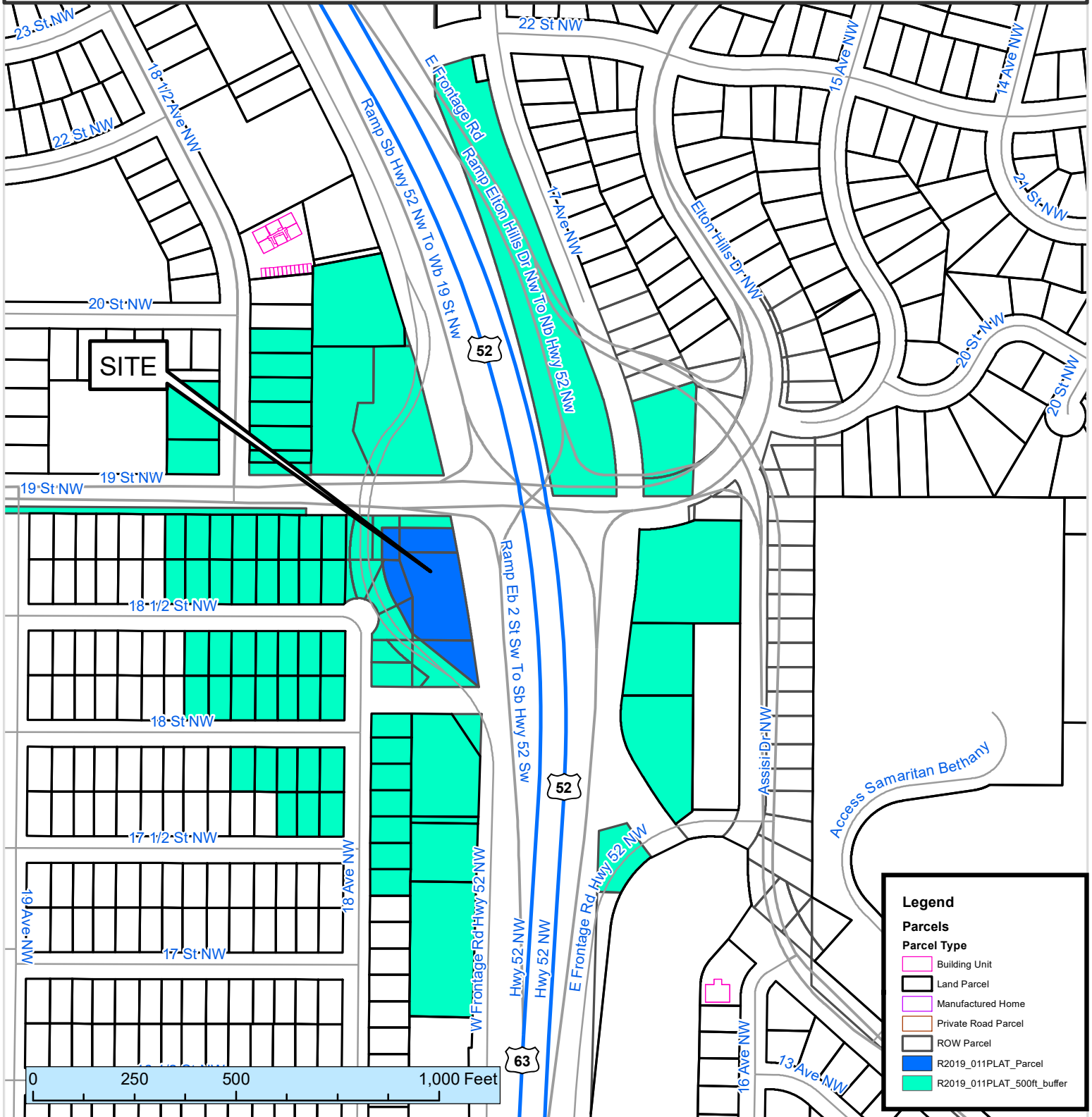


500 ft. Notification Area of

Final Plat R2019-011PLAT, by F & M Community Bank, to be known as F & M Community Bank Addition, to create one lot on 1.28 acre. The site is located west of Highway 52, east of 18 1/2 Street NW.

City Council Ward: 6 - Annalissa Johnson



This map prepared by the GIS Division, Rochester-Olmsted County Planning Department. Olmsted County is not responsible for omissions or errors contained herein. If discrepancies are found within this map, please notify the GIS Division, Rochester-Olmsted County Planning Department, 2122 Campus Drive SE Rochester MN 55904 (507) 328-7100.

