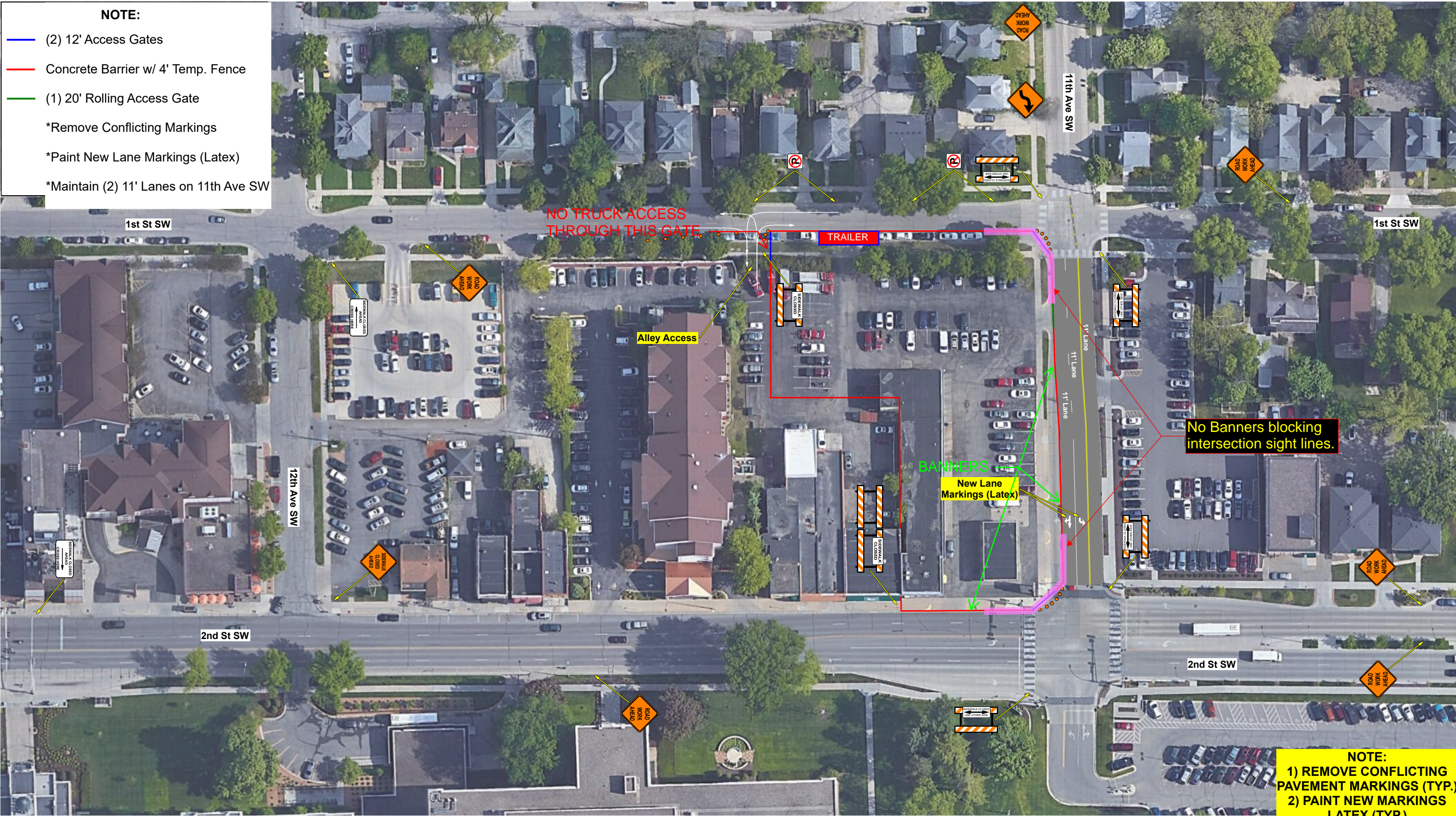


NOTE:

- (2) 12' Access Gates
- Concrete Barrier w/ 4' Temp. Fence
- (1) 20' Rolling Access Gate
- *Remove Conflicting Markings
- *Paint New Lane Markings (Latex)
- *Maintain (2) 11' Lanes on 11th Ave SW



NOTE:
 1) REMOVE CONFLICTING PAVEMENT MARKINGS (TYP.)
 2) PAINT NEW MARKINGS LATEX (TYP.)

1) 4/29/2019 Nick Schumacher
2) Rev. 8/7/2019 Nick Schumacher
NO DATE DWN CKD REVISIONS



Disclaimer - This is a proposed traffic control device layout. It has not been prepared by a Professional Engineer and must be approved and accepted by the Road Authority. Safety Signs LLC does not assume any legal liability.

WEIS BUILDERS
 ELEVEN02 HOTEL - ROCHESTER



11TH AVE SW & 2ND ST SW - ROCHESTER
 SHEET NO. Phase 3 - 1 OF 1 SHEETS