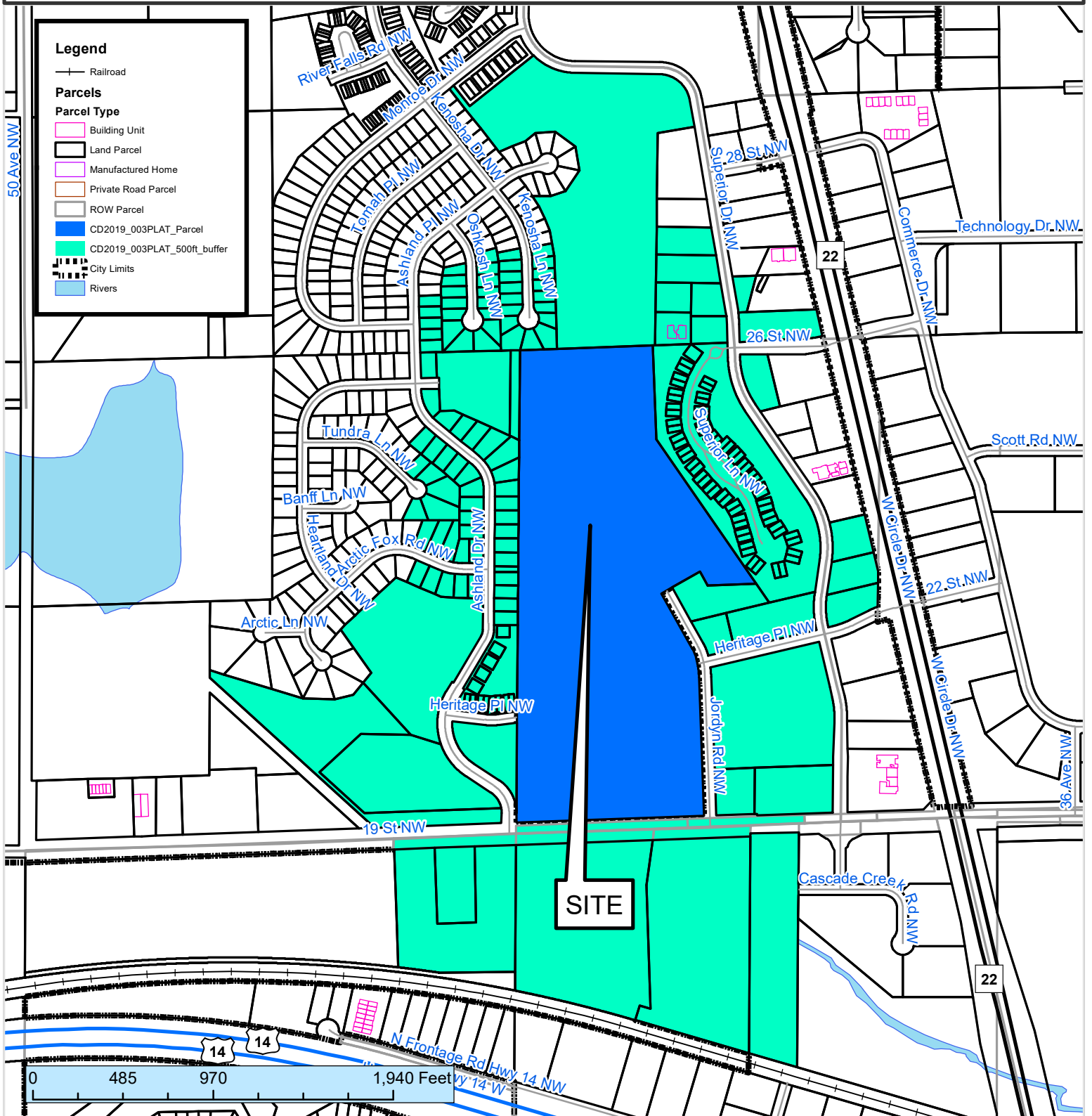


## 500 ft. Notification Area of

General Development Plan #CD00001GDP by Cravath Homes, LLC, consisting of a multi-phased single-family attached dwelling unit development, encompassing a total of 144 dwelling units on 55.11 gross acres within an R-2 zone district. Proposal includes one recreational open space area and one outlot. The subject site is generally located at the northwest corner of Jordyn Road NW

**City Council Ward: 2 - Wojcik, 3 - Campion**



This map prepared by the GIS Division, Rochester-Olmsted County Planning Department. Olmsted County is not responsible for omissions or errors contained herein. If discrepancies are found within this map, please notify the GIS Division, Rochester-Olmsted County Planning Department, 2122 Campus Drive SE Rochester MN 55904 (507) 328-7100.

Map Date: 1/4/2017

