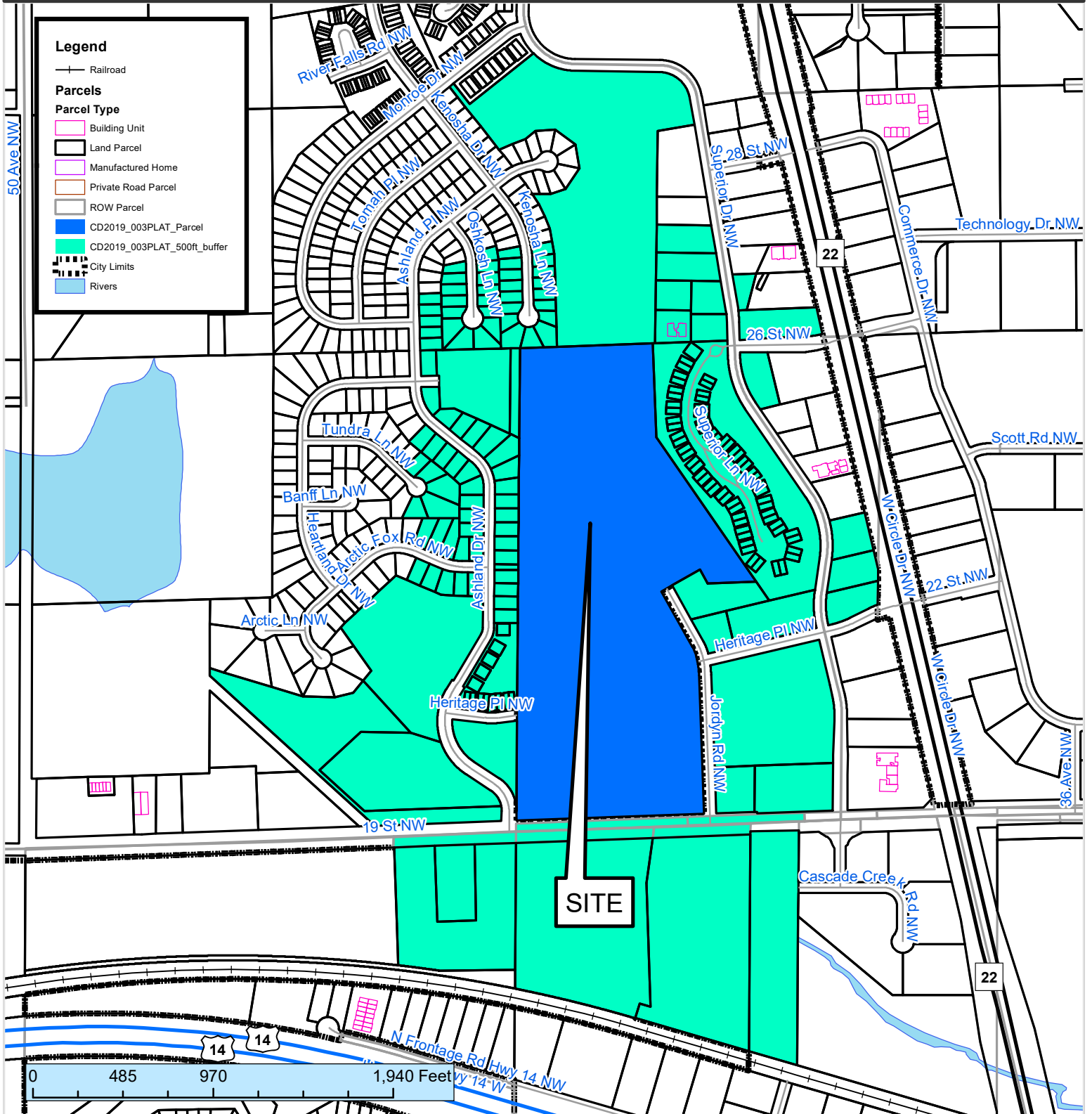


500 ft. Notification Area of

Preliminary Plat CD2019-003PLAT by Cravath Homes, LLC, to be known as "West Glen Subdivision", consisting of 34 residential lots and 2 outlots on 55.11 gross acres within an R-2 Zone District. The application includes a request for a substantial land alteration for a cut or fill in excess of 10 feet in height. The subject site is generally located at the northwest corner of Jordyn Road NW

City Council Ward: 2 - Wojcik, 3 - Campion



This map prepared by the GIS Division, Rochester-Olmsted County Planning Department. Olmsted County is not responsible for omissions or errors contained herein. If discrepancies are found within this map, please notify the GIS Division, Rochester-Olmsted County Planning Department, 2122 Campus Drive SE Rochester MN 55904 (507) 328-7100.

Map Date: 1/4/2017

