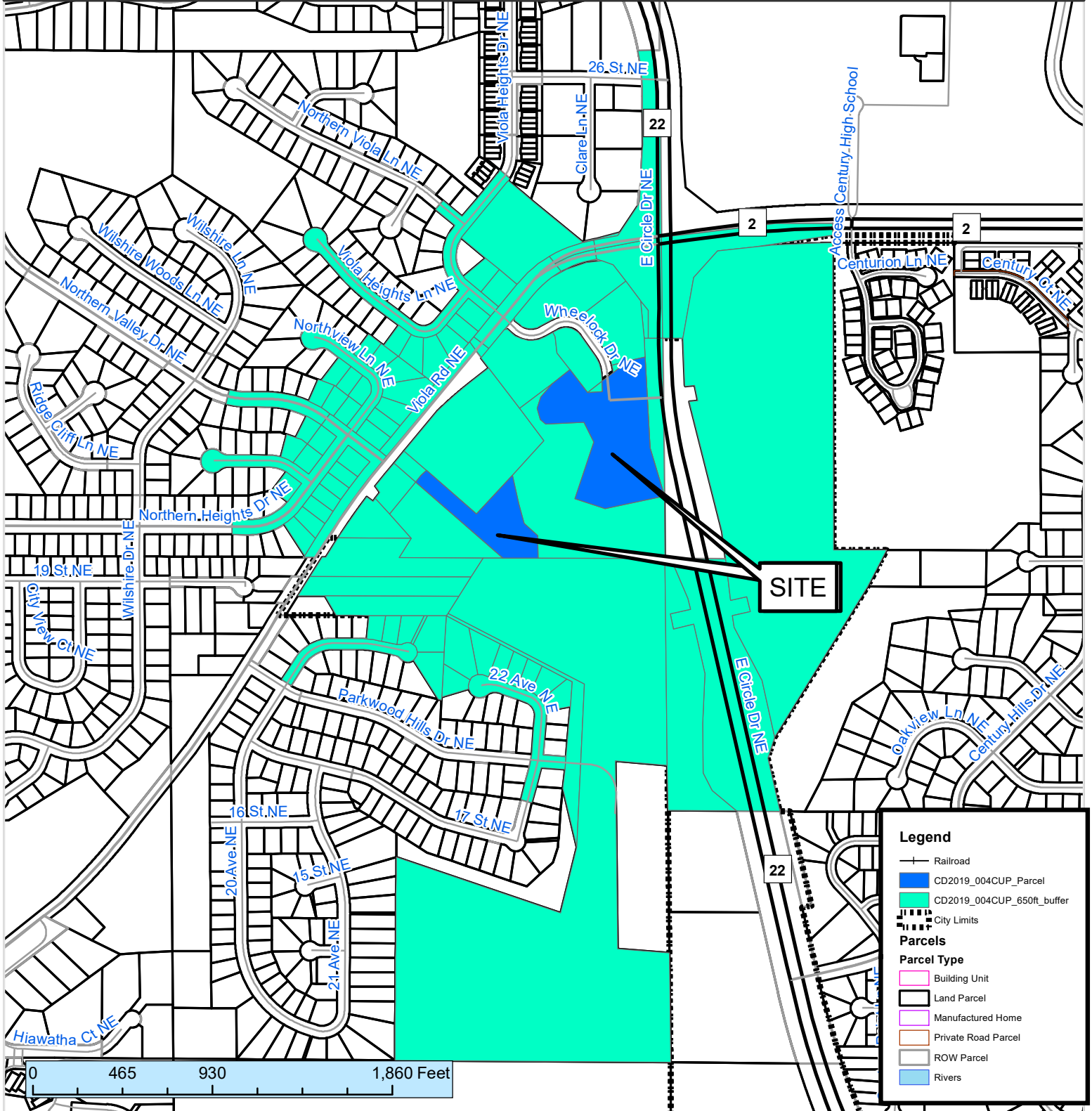


500 ft. Notification Area of

Conditional Use Permit -Restricted Development Preliminary Plan #CD2019-004CUP by Hersch Hoaglan, to be known as Century Heights. The plan identifies a four story multi-family building containing 76 dwelling units on 4.25 acres. The site is located on the west side of East Circle Road NE, south of Wheelock Drive NE.

City Council Ward: 5 - Palmer



This map prepared by the GIS Division, Rochester-Olmsted County Planning Department. Olmsted County is not responsible for omissions or errors contained herein. If discrepancies are found within this map, please notify the GIS Division, Rochester-Olmsted County Planning Department, 2122 Campus Drive SE Rochester MN 55904 (507) 328-7100.

