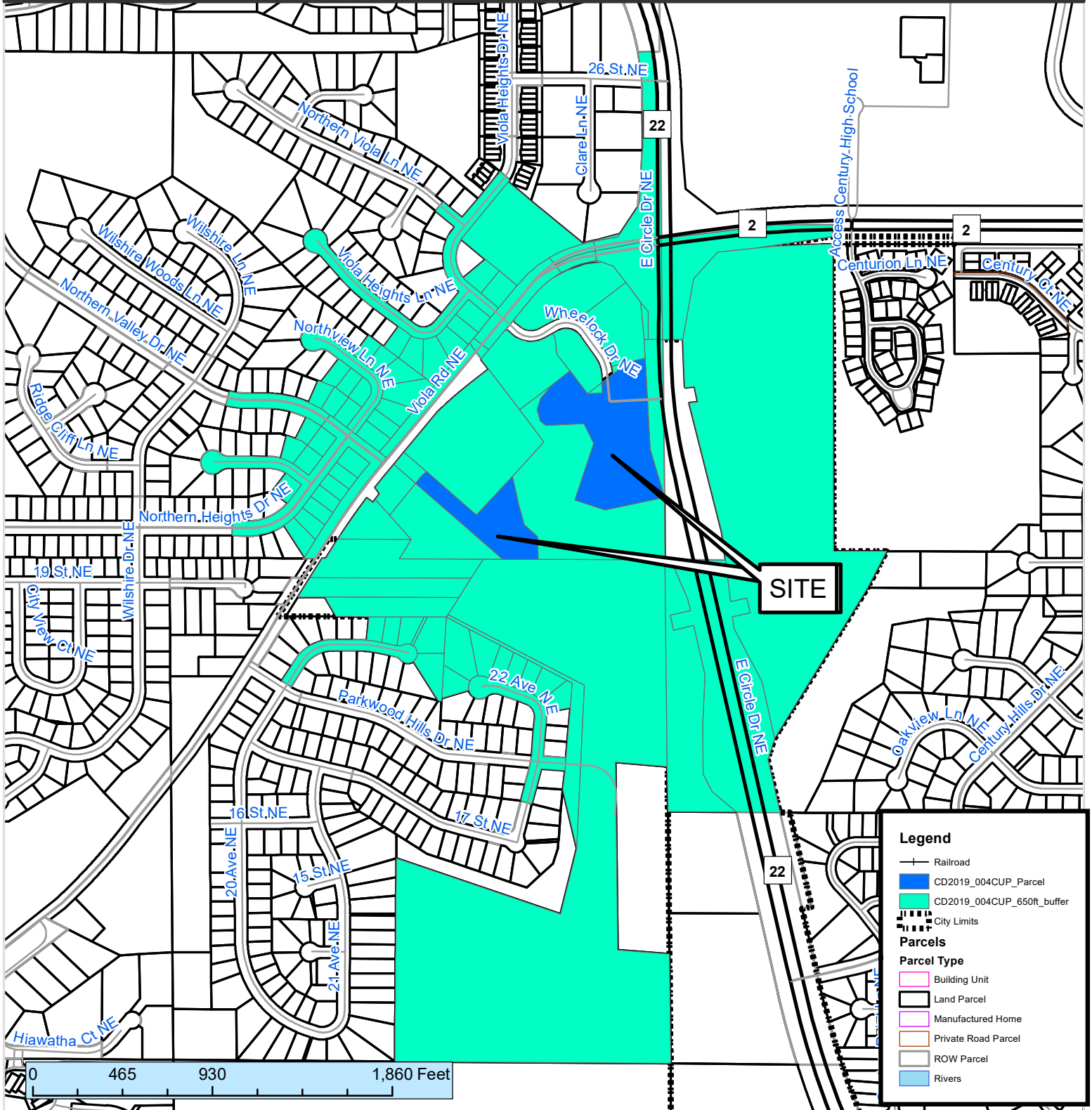


500 ft. Notification Area of

General Development Plan #CD00002GDP by Hersch Hoaglan, to be known as Century Heights. The General Development Plan is 9.3 acres in size and consists a 76-unit multi-family development, future commercial uses and a future residential property. The site is located on the west side of East Circle Road NE, east of Viola Road NE. The site is currently in Haverhill Township

City Council Ward: 5 - Palmer



This map prepared by the GIS Division, Rochester-Olmsted County Planning Department. Olmsted County is not responsible for omissions or errors contained herein. If discrepancies are found within this map, please notify the GIS Division, Rochester-Olmsted County Planning Department, 2122 Campus Drive SE Rochester MN 55904 (507) 328-7100.

