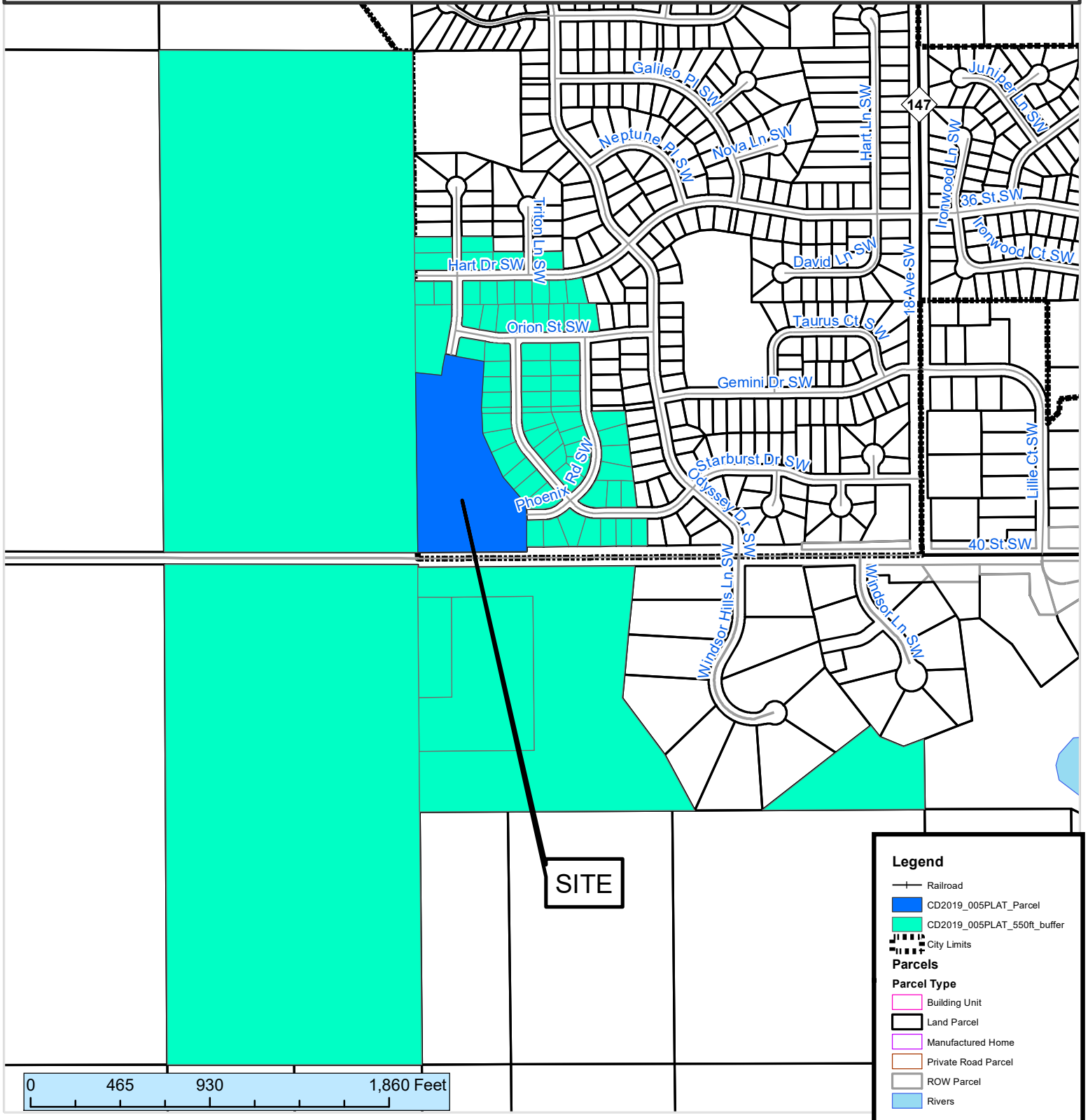


550 ft. Notification Area of

Final Plat CD2019-005PLAT, by Arcon Development, Inc. to be known as Hart Farm South Ninth. The plat would create 25 lots and two (2) outlots on 10.18 acres of land. The site is north of 40th Street SW and west of Starburst Drive SW.

City Council Ward: 1 - Patrick Keane



This map prepared by the GIS Division, Rochester-Olmsted County Planning Department. Olmsted County is not responsible for omissions or errors contained herein. If discrepancies are found within this map, please notify the GIS Division, Rochester-Olmsted County Planning Department, 2122 Campus Drive SE Rochester MN 55904 (507) 328-7100.

Map Date: 09/04/2019

