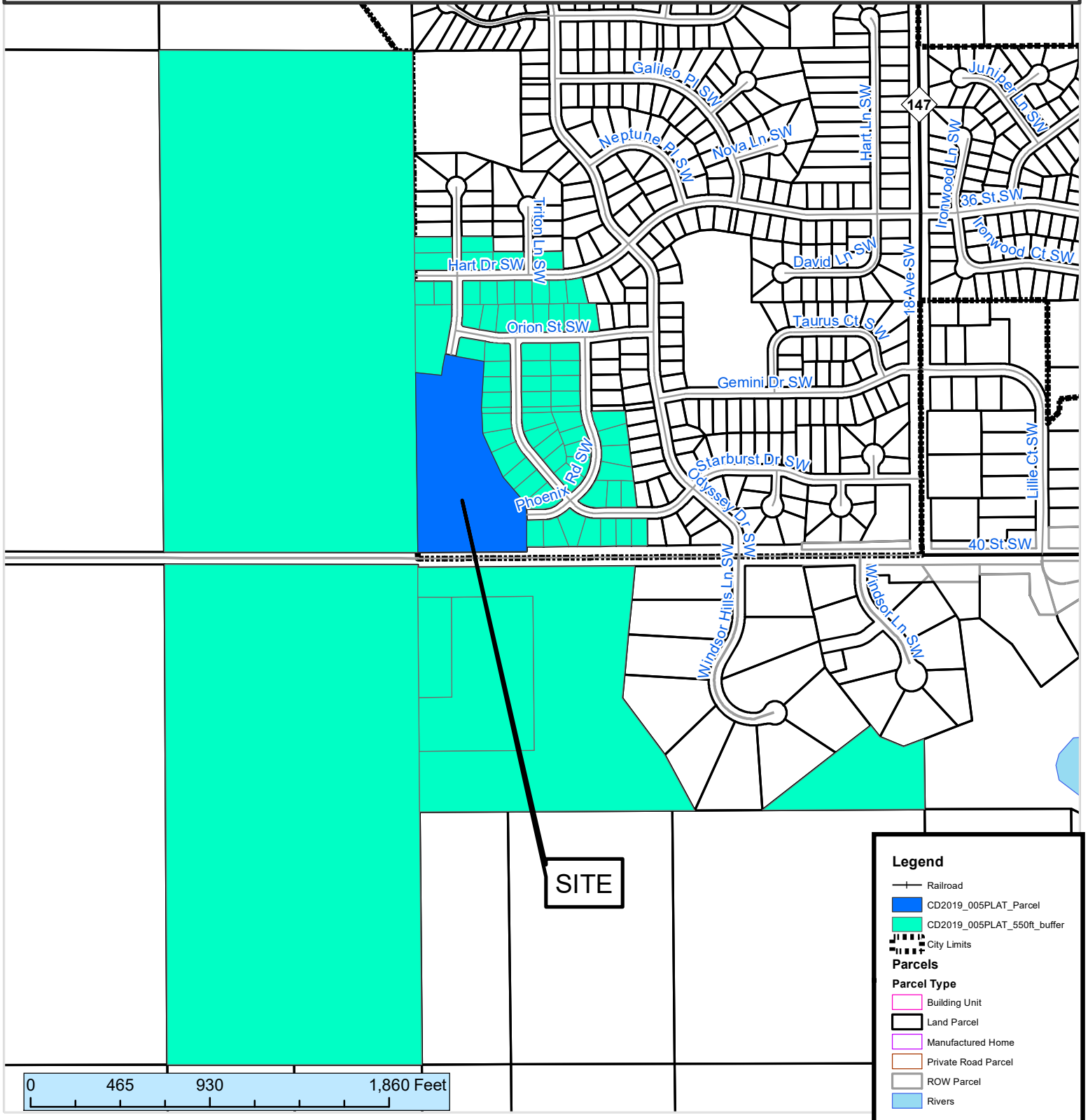


550 ft. Notification Area of

General Development Plan Amendment #R00205GDP, by Arcon Development, Inc. The amendment removes a street intersection which extended Galaxy Drive SW to 40th Street SW. The proposed amendment terminates the southern intersection of Galaxy Drive where it intersects with Phoenix Road SW.

City Council Ward: 1 - Patrick Keane



This map prepared by the GIS Division, Rochester-Olmsted County Planning Department. Olmsted County is not responsible for omissions or errors contained herein. If discrepancies are found within this map, please notify the GIS Division, Rochester-Olmsted County Planning Department, 2122 Campus Drive SE Rochester MN 55904 (507) 328-7100.

Map Date: 09/04/2019

