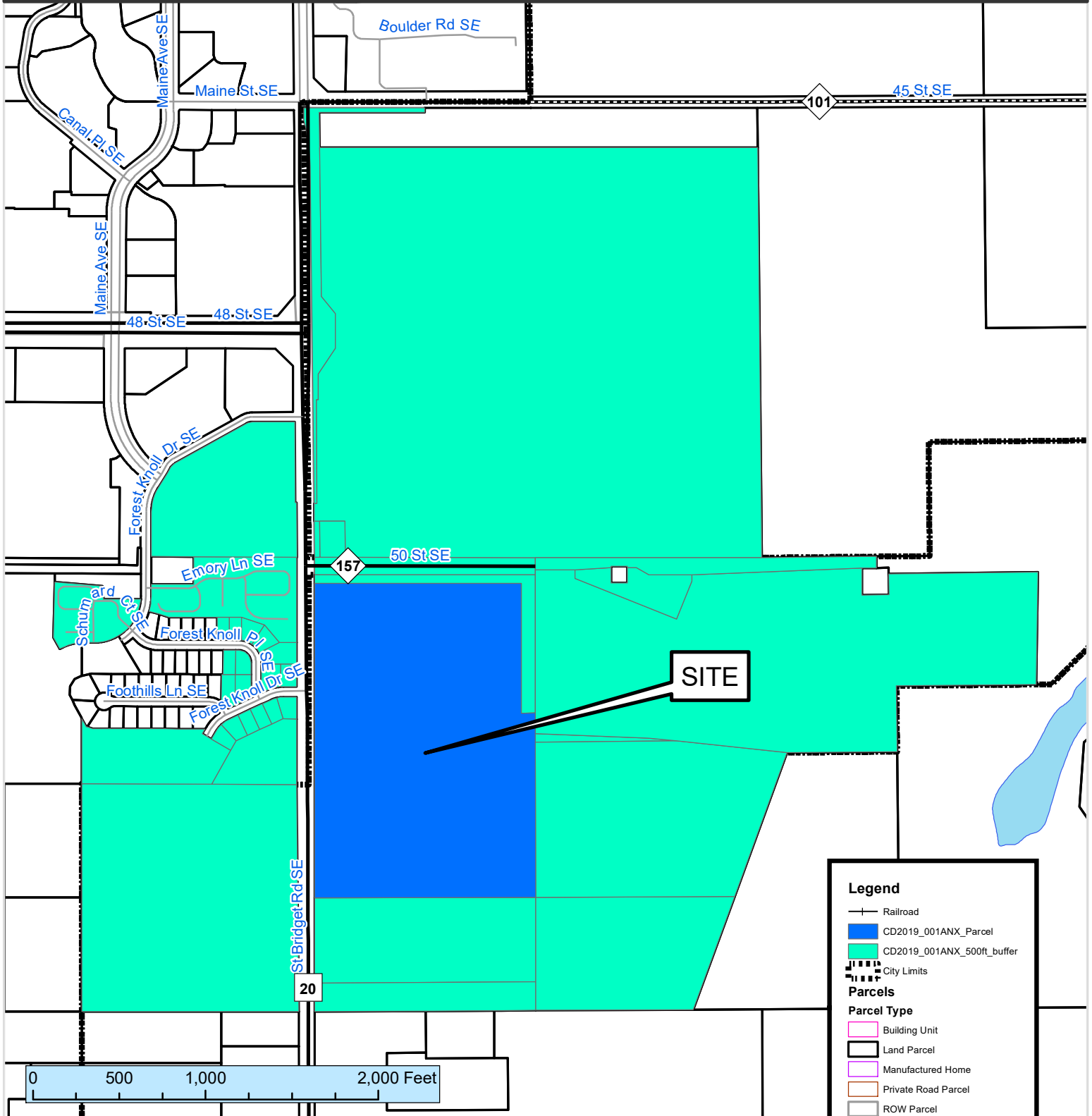


# 500 ft. Notification Area of

Annexation by Ordinance #CD2019-001ANX, by Olmsted County, for annexation of 5.42-acres of land in Rochester Township. The site is located on the south side of 50th Street SE, east of St Bridget Road SE.

## City Council Ward: 1 - Keane



This map prepared by the GIS Division, Rochester-Olmsted County Planning Department. Olmsted County is not responsible for omissions or errors contained herein. If discrepancies are found within this map, please notify the GIS Division, Rochester-Olmsted County Planning Department, 2122 Campus Drive SE Rochester MN 55904 (507) 328-7100.