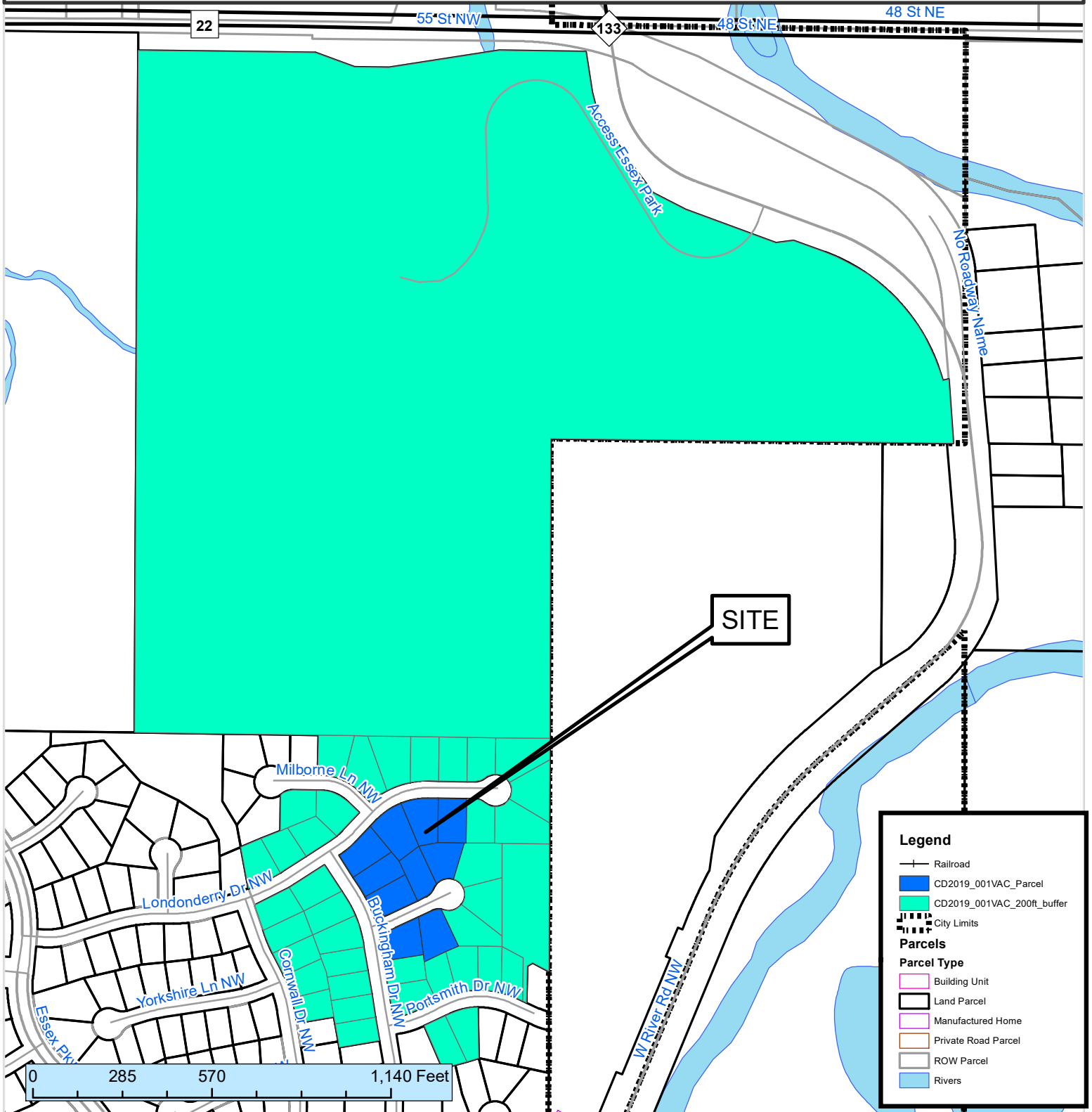


### 200 ft. Notification Area of

Vacation petition CD2019-001VAC by Essex Estate Properties LLC to vacate 20-foot wide drainage and 10-foot wide utility easements on certain lots of Block 3, Essex Estates Fifth Ave Subdivision to facilitate single-family attached homes. The site is located west of West River Road NW, north of Picadilly Lane NW.

City Council Ward: 6 - Annalissa Johnson



This map prepared by the GIS Division, Rochester-Olmsted County Planning Department. Olmsted County is not responsible for omissions or errors contained herein. If discrepancies are found within this map, please notify the GIS Division, Rochester-Olmsted County Planning Department, 2122 Campus Drive SE Rochester MN 55904 (507) 328-7100.

Map Date: 08/02/2019

