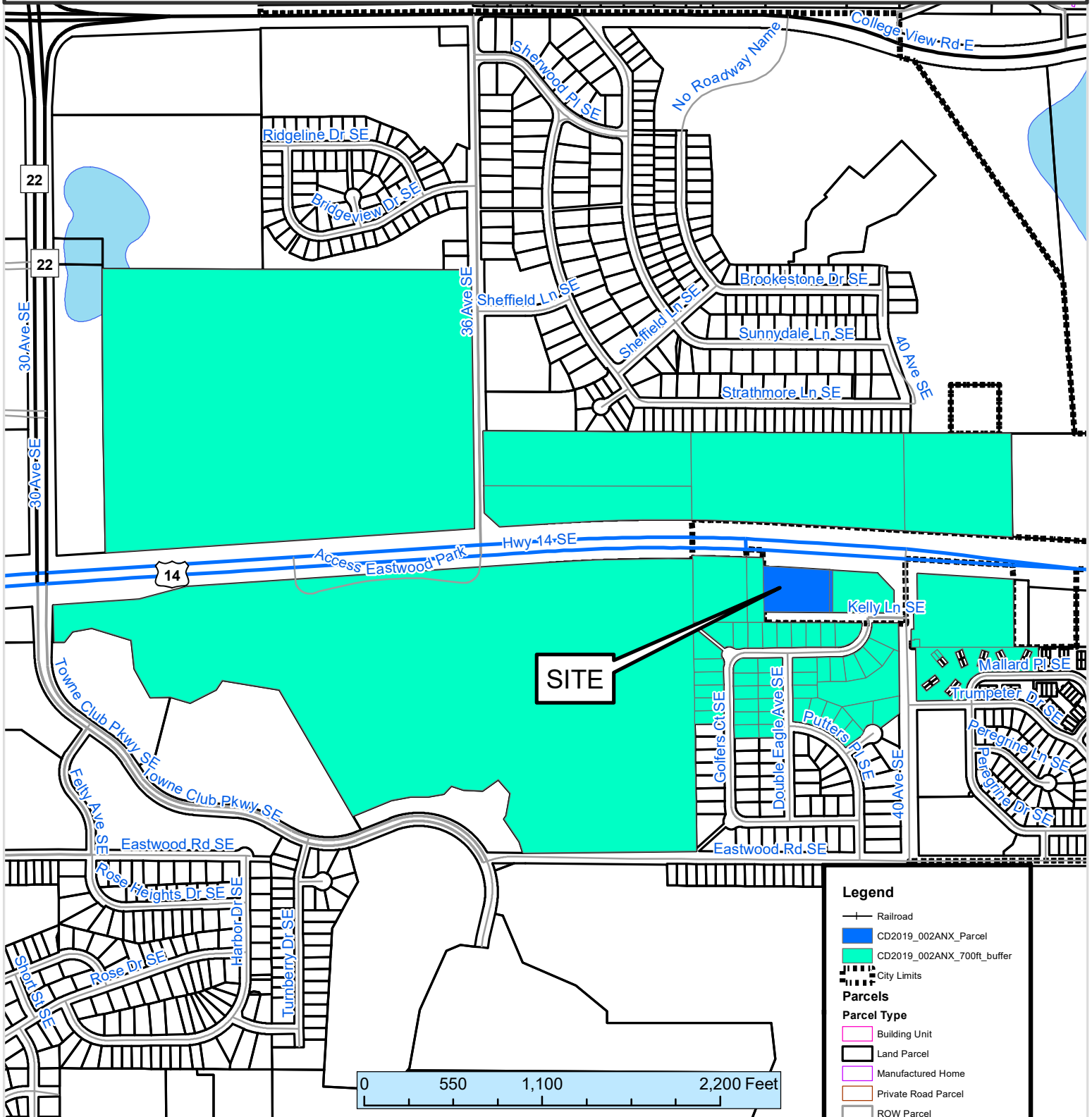


# 500 ft. Notification Area of

Annexation by Ordinance #CD2019-002ANX, by Jay Maier, for annexation of 2.65-acres of land in Marion Township. The site is located on the south side of Hwy 14, west of 40th Ave SE (3930 Hwy 14 E, 55904)

## City Council Ward: 4 - Bilderback



This map prepared by the GIS Division, Rochester-Olmsted County Planning Department. Olmsted County is not responsible for omissions or errors contained herein. If discrepancies are found within this map, please notify the GIS Division, Rochester-Olmsted County Planning Department, 2122 Campus Drive SE Rochester MN 55904 (507) 328-7100.

Map Date: 1/4/2017