

STALL DIMENSIONS (SD)		
SIZE OF CAR	SHORT TERM	LONG TERM
SMALL	7'6"x15'0"	7'3"x15'0"
STANDARD	8'6"x18'0"	8'4"x18'0"

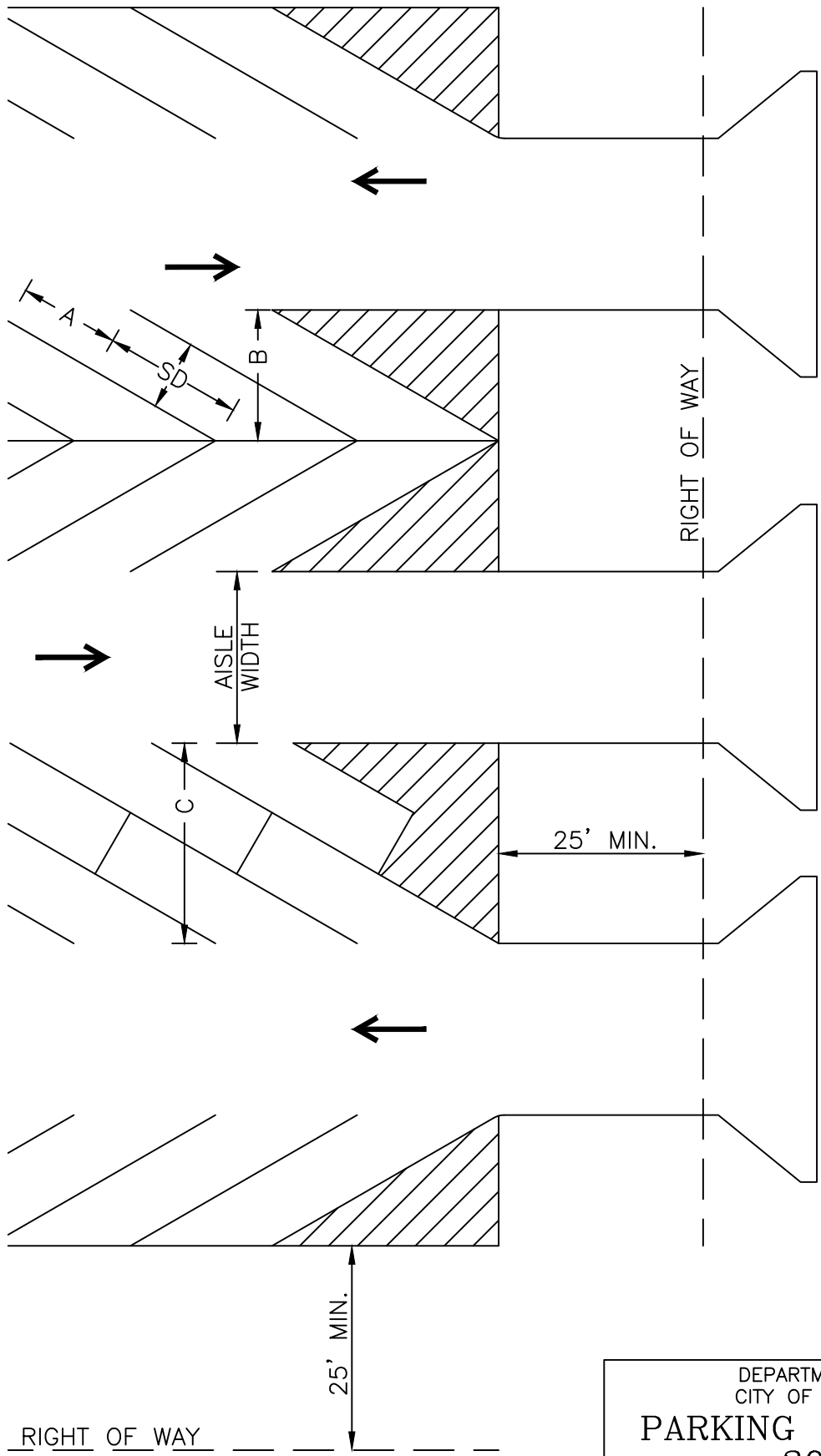
AISLE WIDTH											
SIZE OF CAR	ONE-WAY					TWO-WAY					
	PAR.	30°	45°	60°	90°	PAR.	30°	45°	60°	90°	
SMALL	8'	8'	10'	12'	15'	14'	14'	16'	18'	18'	
STANDARD	10'	11'	12'	13.5'	20'	21'	20'	20'	21'	23'	

DEPARTMENT OF PUBLIC WORKS  
CITY OF ROCHESTER, MINNESOTA

## PARKING STALL DIMENSIONS PARALLEL PARKING

*Dylan S. Dahl*  
CITY ENGINEER

SHT 1 OF 5 SHTS	DATE REVISED 2/2/26	PLATE NO. 8-01	REV. E
-----------------	------------------------	-------------------	-----------



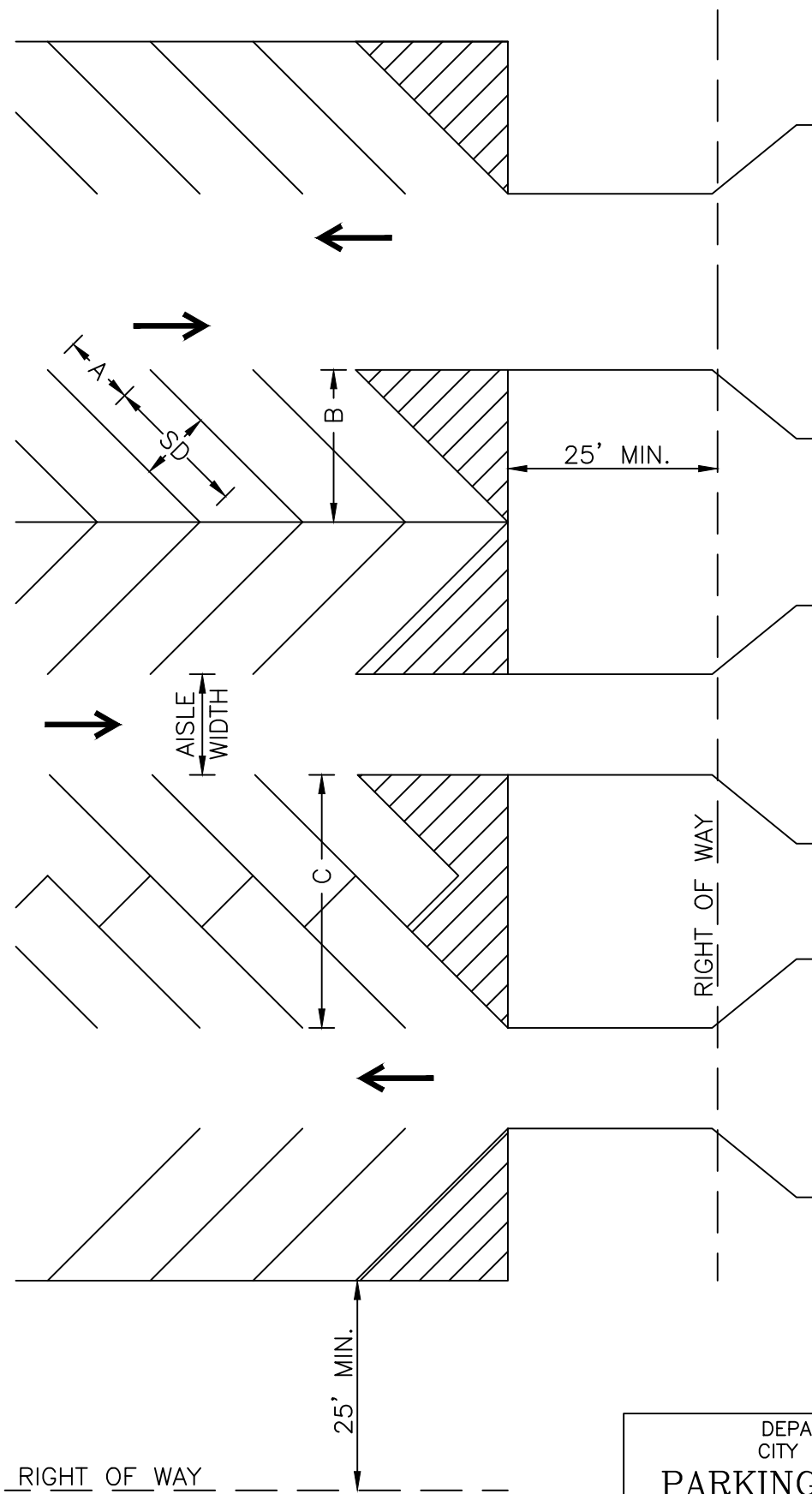
STALL DIMENSIONS (SD)				
SIZE OF CAR	SHORT TERM	A	B	C
SMALL	7'6" x 15'0"	12'11"	15'0"	21'6"
STANDARD	8'6" x 15'0"	15'0"	15'0"	22'6"
	LONG TERM			
SMALL	7'3" x 15'0"	12'7"	13'9"	21'3"
STANDARD	8'4" x 15'0"	14'5"	15'9"	24'3"

AISLE WIDTH		
SIZE OF CAR	ONE-WAY	TWO-WAY
SMALL	8 FT.	14 FT.
STANDARD	11 FT.	20 FT.

DEPARTMENT OF PUBLIC WORKS  
 CITY OF ROCHESTER, MINNESOTA  
**PARKING STALL DIMENSIONS**  
**30° PARKING**

*Dylan S. Dahl*  
 CITY ENGINEER

SHT 2 OF 5 SHTS	DATE REVISED 2/2/26	PLATE NO. 8-01	REV. E
-----------------	------------------------	-------------------	-----------



STALL DIMENSIONS (SD)				
SIZE OF CAR	SHORT TERM	A	B	C
SMALL	7'6" x 15'0"	7'6"	15'11"	26'6"
STANDARD	8'6" x 17'7"	8'6"	17'7"	29'2"
	LONG TERM			
SMALL	7'3" x 15'0"	7'3"	15'9"	26'4"
STANDARD	8'4" x 17'0"	8'4"	17'11"	29'11"

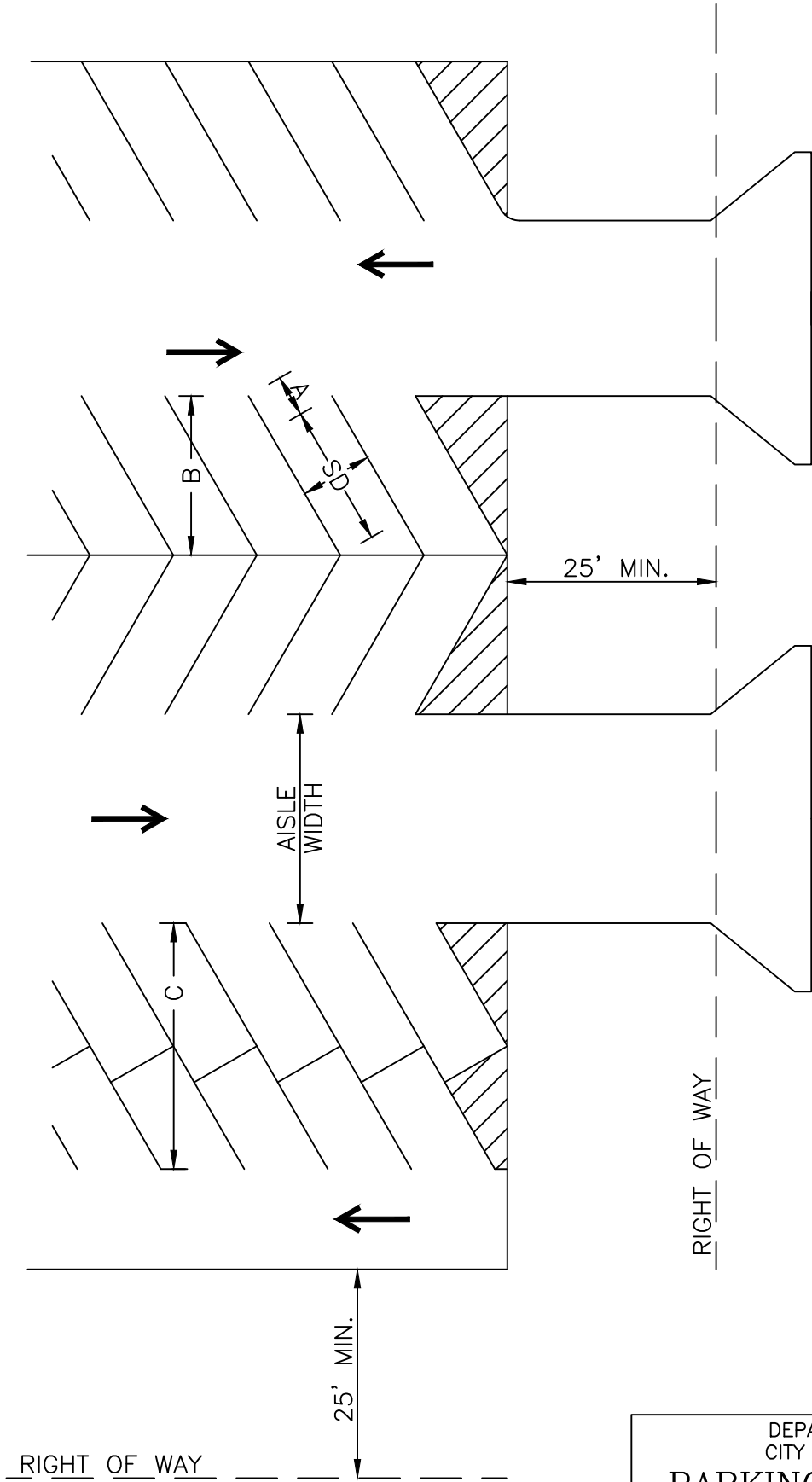
AISLE WIDTH		
SIZE OF CAR	ONE-WAY	TWO-WAY
SMALL	10 FT.	16 FT.
STANDARD	12 FT.	20 FT.

DEPARTMENT OF PUBLIC WORKS  
CITY OF ROCHESTER, MINNESOTA

## PARKING STALL DIMENSIONS 45° PARKING

*Dylan S. Dahl*  
CITY ENGINEER

SHT 3 OF 5 SHTS	DATE REVISED 2/2/26	PLATE NO. 8-01	REV. E
-----------------	------------------------	-------------------	-----------



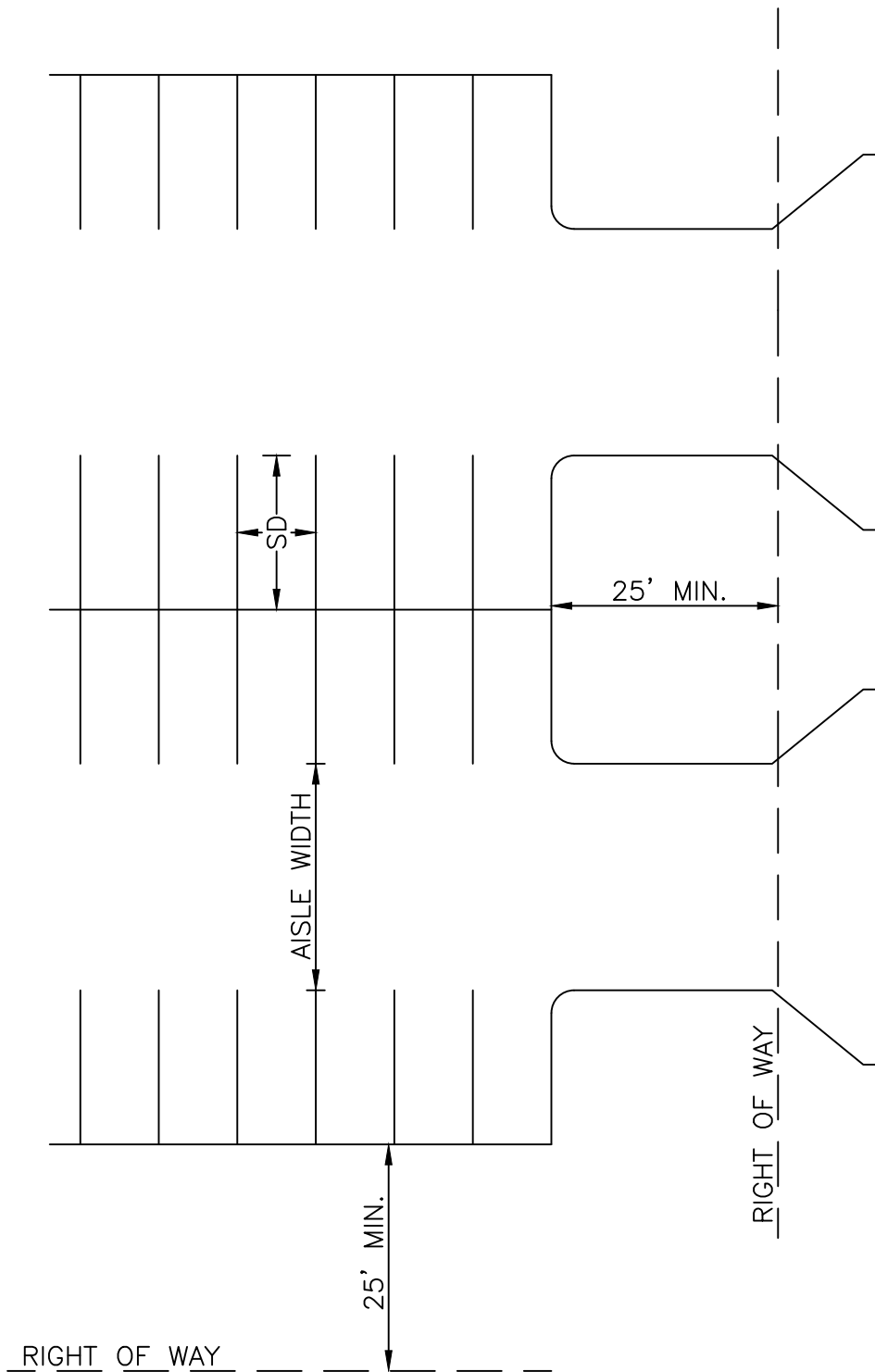
STALL DIMENSIONS (SD)				
SIZE OF CAR	SHORT TERM	A	B	C
SMALL	7'6" x 15'0"	4'4"	16'9"	29'9"
STANDARD	8'6" x 19'0"	4'11"	19'0"	33'9"
	LONG TERM			
SMALL	7'3" x 15'0"	4'2"	16'7"	29'7"
STANDARD	8'4" x 17'0"	4'10"	18'11"	33'7"

AISLE WIDTH		
SIZE OF CAR	ONE-WAY	TWO-WAY
SMALL	12 FT.	18 FT.
STANDARD	13.6 FT.	21 FT.

DEPARTMENT OF PUBLIC WORKS  
 CITY OF ROCHESTER, MINNESOTA  
**PARKING STALL DIMENSIONS**  
**60° PARKING**

*Dylan S. Dahl*  
 CITY ENGINEER

SHT 4 OF 5 SHTS	DATE REVISED 2/2/26	PLATE NO. 8-01	REV. E
-----------------	------------------------	-------------------	-----------



STALL DIMENSIONS (SD)		
SIZE OF CAR	SHORT TERM	LONG TERM
SMALL	7'6" x 15'0"	7'3" x 15'0"
STANDARD	8'6" x 18'0"	8'4" x 17'0"

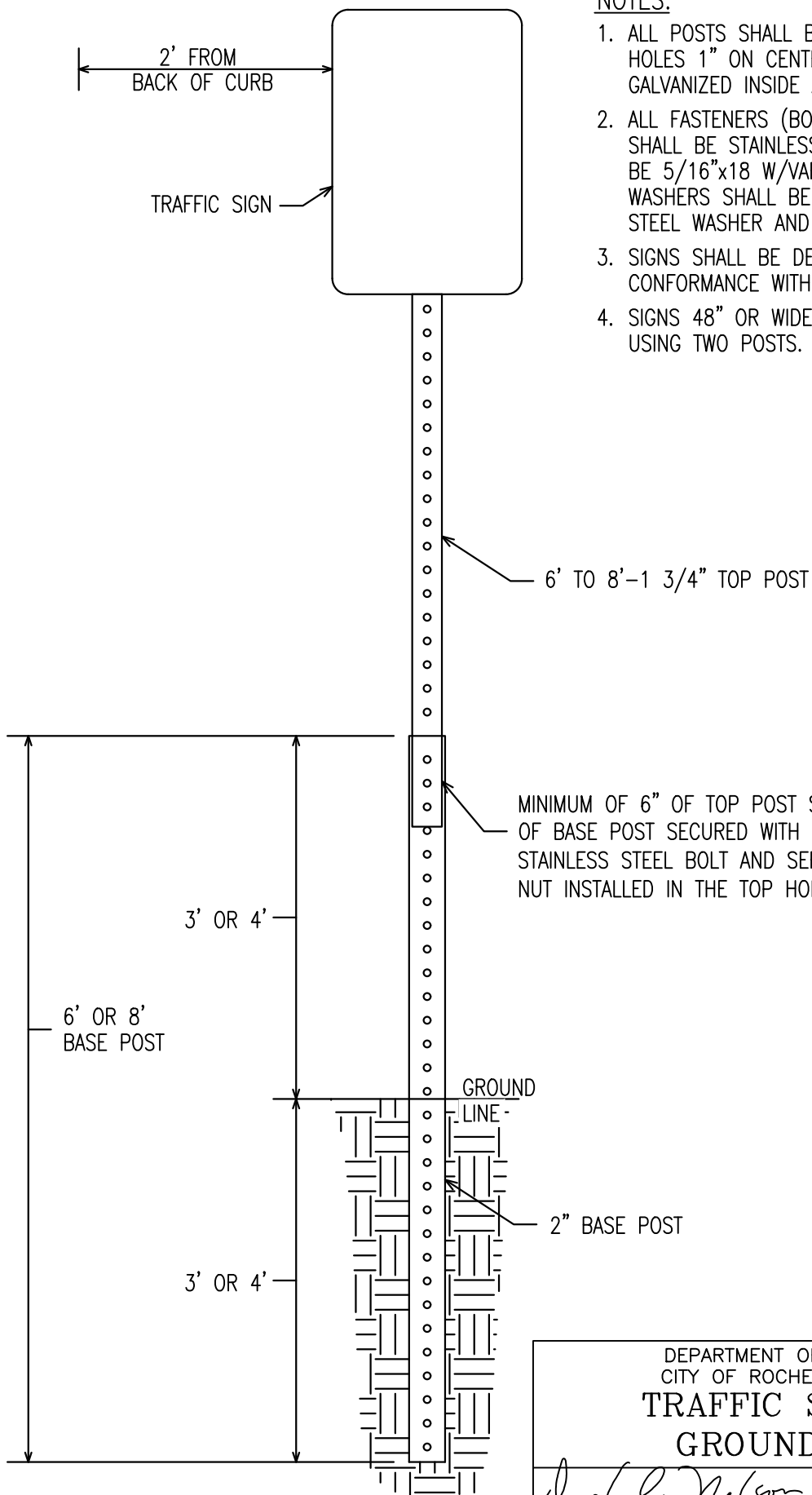
AISLE WIDTH		
SIZE OF CAR	ONE-WAY	TWO-WAY
SMALL	15 FT.	18 FT.
STANDARD	20 FT.	23 FT.

DEPARTMENT OF PUBLIC WORKS  
CITY OF ROCHESTER, MINNESOTA

## PARKING STALL DIMENSIONS 90° PARKING

*Dylan S. Dahl*  
CITY ENGINEER

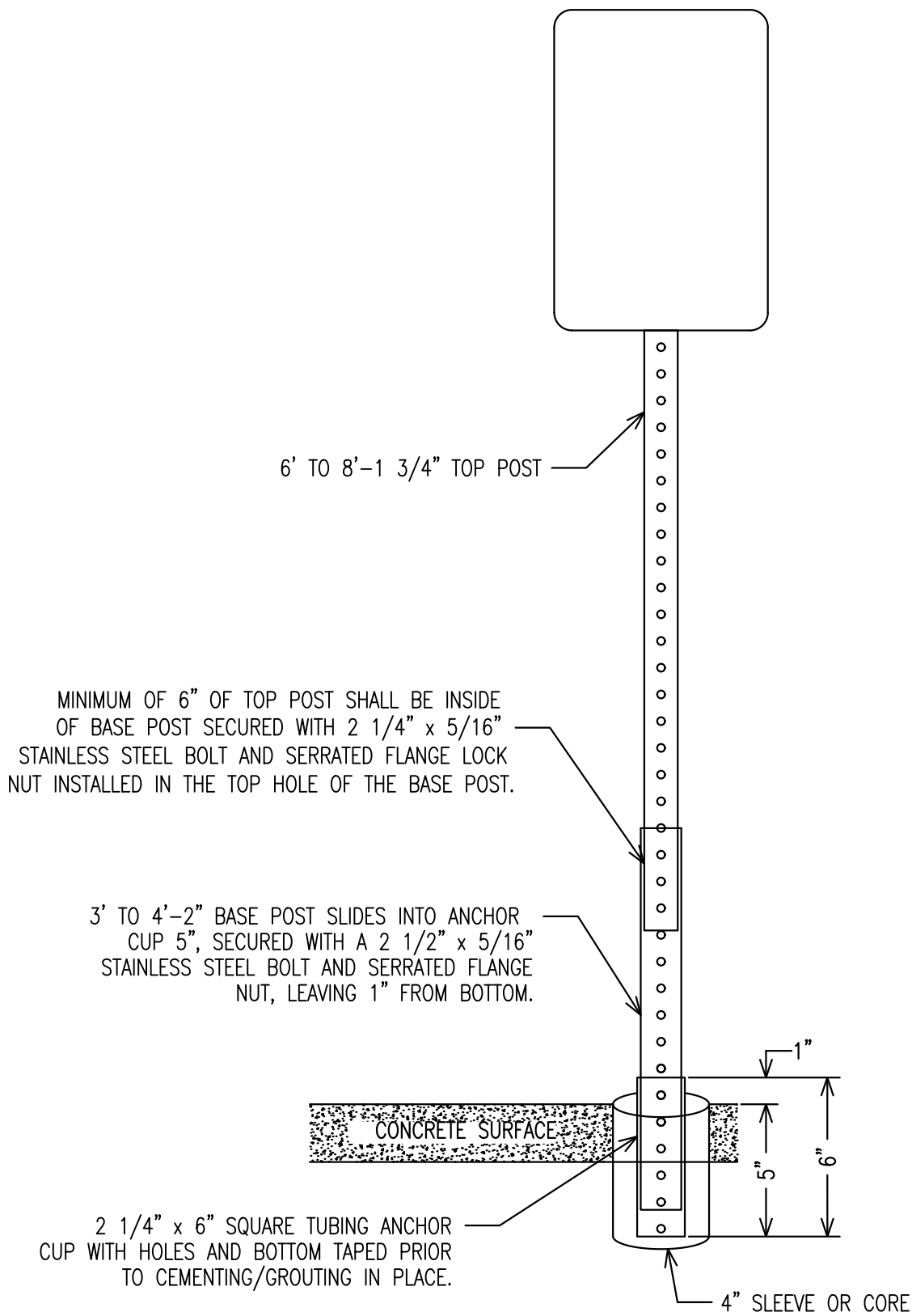
SHT 5 OF 5 SHTS	DATE REVISED 2/2/26	PLATE NO. 8-01	REV. E
-----------------	------------------------	-------------------	-----------



NOTES:

1. ALL POSTS SHALL BE SQUARE TUBING WITH HOLES 1" ON CENTER, 12 GA. STEEL, GALVANIZED INSIDE AND OUT.
2. ALL FASTENERS (BOLTS, NUT AND WASHERS) SHALL BE STAINLESS STEEL. ALL BOLTS WILL BE 5/16"x18 W/VARIED LENGTH. NYLON WASHERS SHALL BE USED BETWEEN THE STEEL WASHER AND THE SIGN FACE.
3. SIGNS SHALL BE DESIGNED AND MOUNTED IN CONFORMANCE WITH MN/MUTCD.
4. SIGNS 48" OR WIDER SHALL BE INSTALLED USING TWO POSTS.

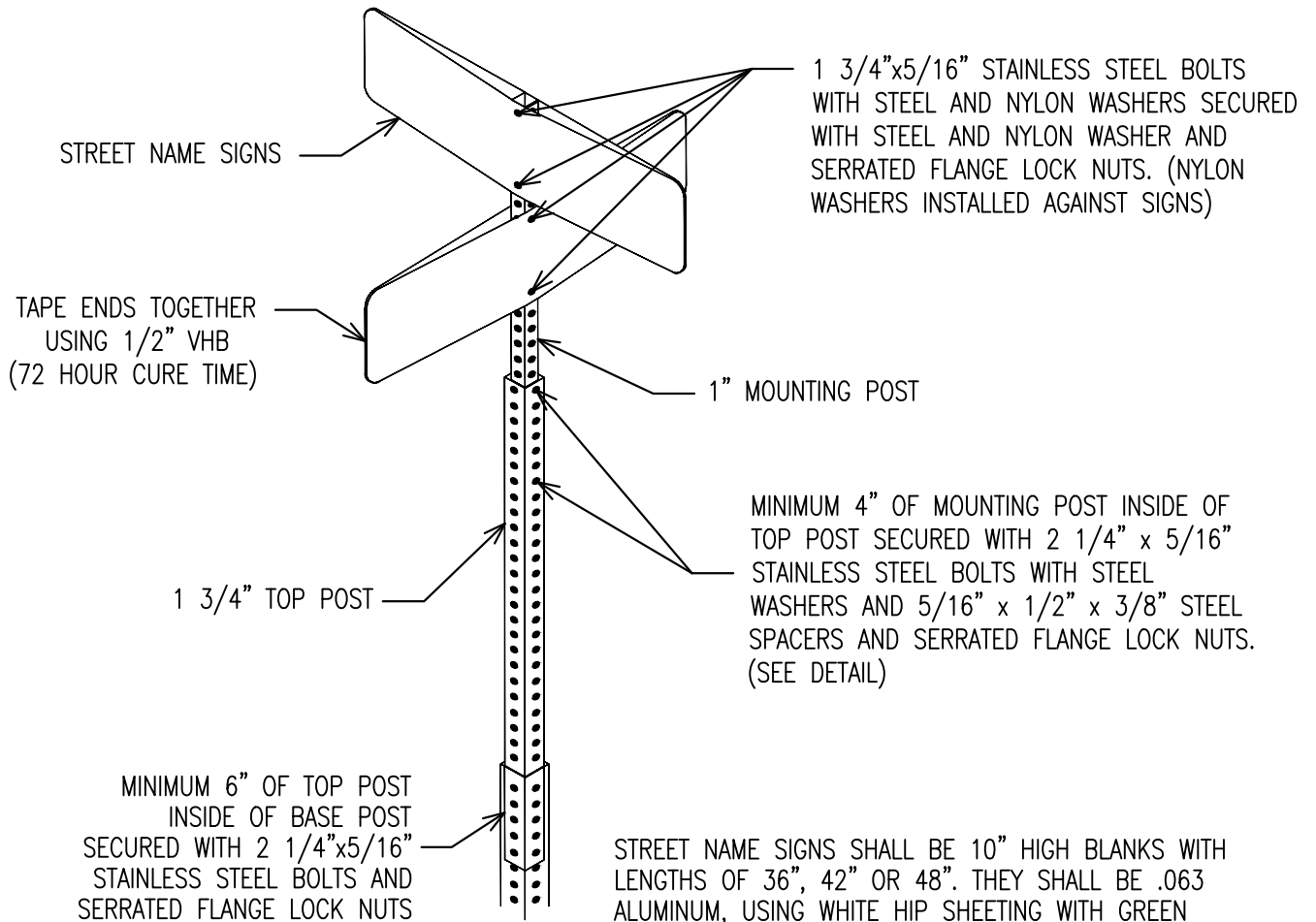
DEPARTMENT OF PUBLIC WORKS CITY OF ROCHESTER, MINNESOTA <b>TRAFFIC SIGN POST</b> <b>GROUND MOUNT</b>			
<i>Donald Nelson</i> ASST. CITY ENGINEER		<i>Keith W. Frenn</i> DIRECTOR	
SHT 1 OF 3 SHTS	DATE REVISED 1/20/17	PLATE NO. 8-02	REV. A



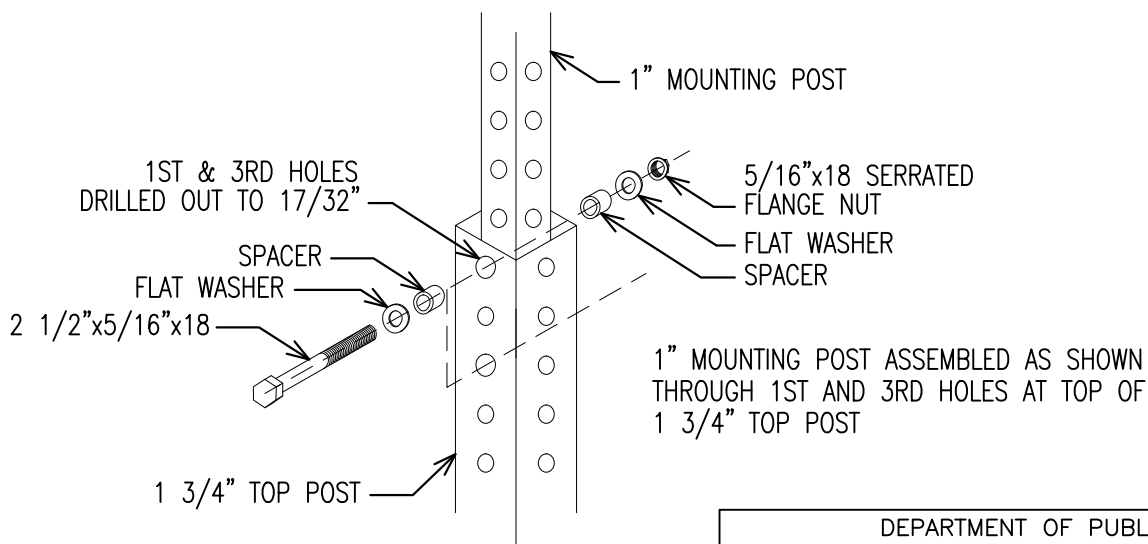
**NOTE:**

USE A 4" CYLINDER FORM (REMOVED BEFORE CEMENTING/GROUTING THE ANCHOR/BASE CUP) PRIOR TO POURING CONCRETE SURFACE, OR CORE A 4" HOLE IN THE EXISTING CONCRETE AT SIGN LOCATIONS FOR CEMENTING/GROUTING THE 6" ANCHOR/BASE CUP INPLACE. (INCIDENTAL)

DEPARTMENT OF PUBLIC WORKS CITY OF ROCHESTER, MINNESOTA <b>TRAFFIC SIGN POST          MOUNTED IN CONCRETE</b>			
<i>Douglas Nelson</i> ASST. CITY ENGINEER		<i>Keith W. Frenn</i> DIRECTOR	
SHT 2 OF 3 SHTS	DATE REVISED 1/20/17	PLATE NO. 8-02	REV. A



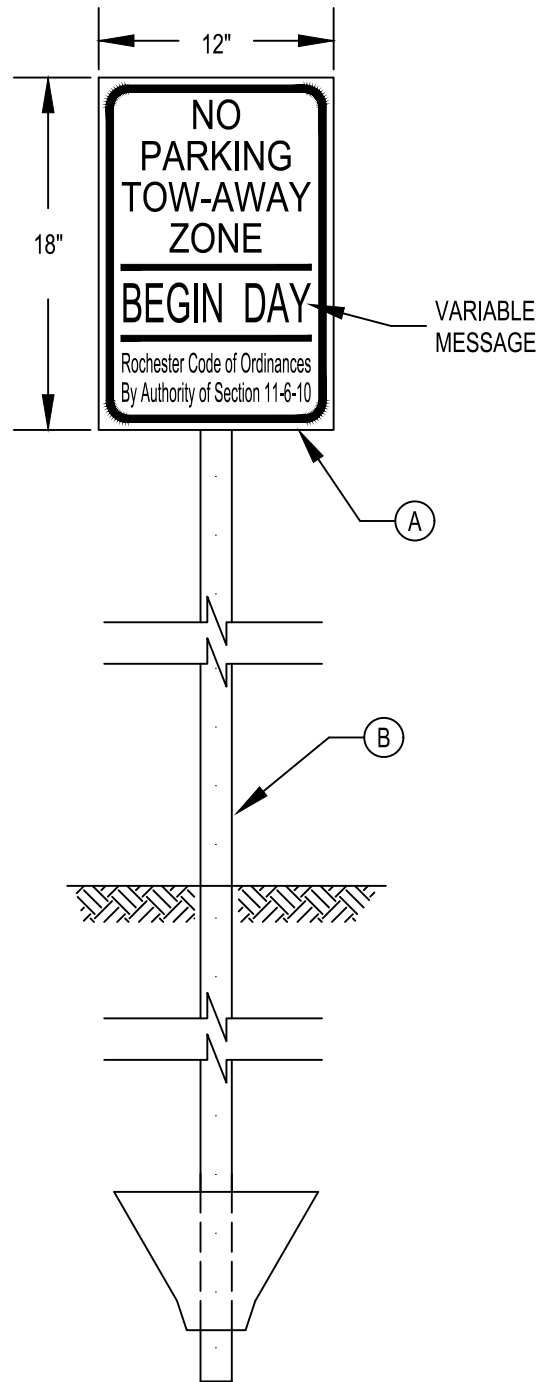
STREET NAME SIGNS SHALL BE 10" HIGH BLANKS WITH LENGTHS OF 36", 42" OR 48". THEY SHALL BE .063 ALUMINUM, USING WHITE HIP SHEETING WITH GREEN FILM, LEAVING 1/2" OUTSIDE BORDER. LETTERING SHALL BE SERIES "C", WITH 6" UPPER AND 4 1/2" LOWER CASE. FOR LONGER NAMES, THE FONT/STROKE CAN BE VARIED TO FIT THE SIGN. NAMES AND ROADWAY TYPES ARE ALWAYS UPPER/LOWER CASE, AND QUADRANTS ARE ALWAYS UPPER CASE.



STREET NAME MOUNTING POST DETAIL

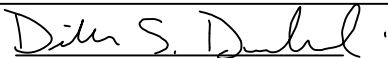
DEPARTMENT OF PUBLIC WORKS CITY OF ROCHESTER, MINNESOTA			
<b>STREET NAME SIGN POST DETAIL</b>			
<i>Donald Nelson</i> ASST. CITY ENGINEER		<i>Keith W. Frenn</i> DIRECTOR	
SHT 3 OF 3 SHTS	DATE REVISED 1/20/17	PLATE NO. 8-02	REV. A

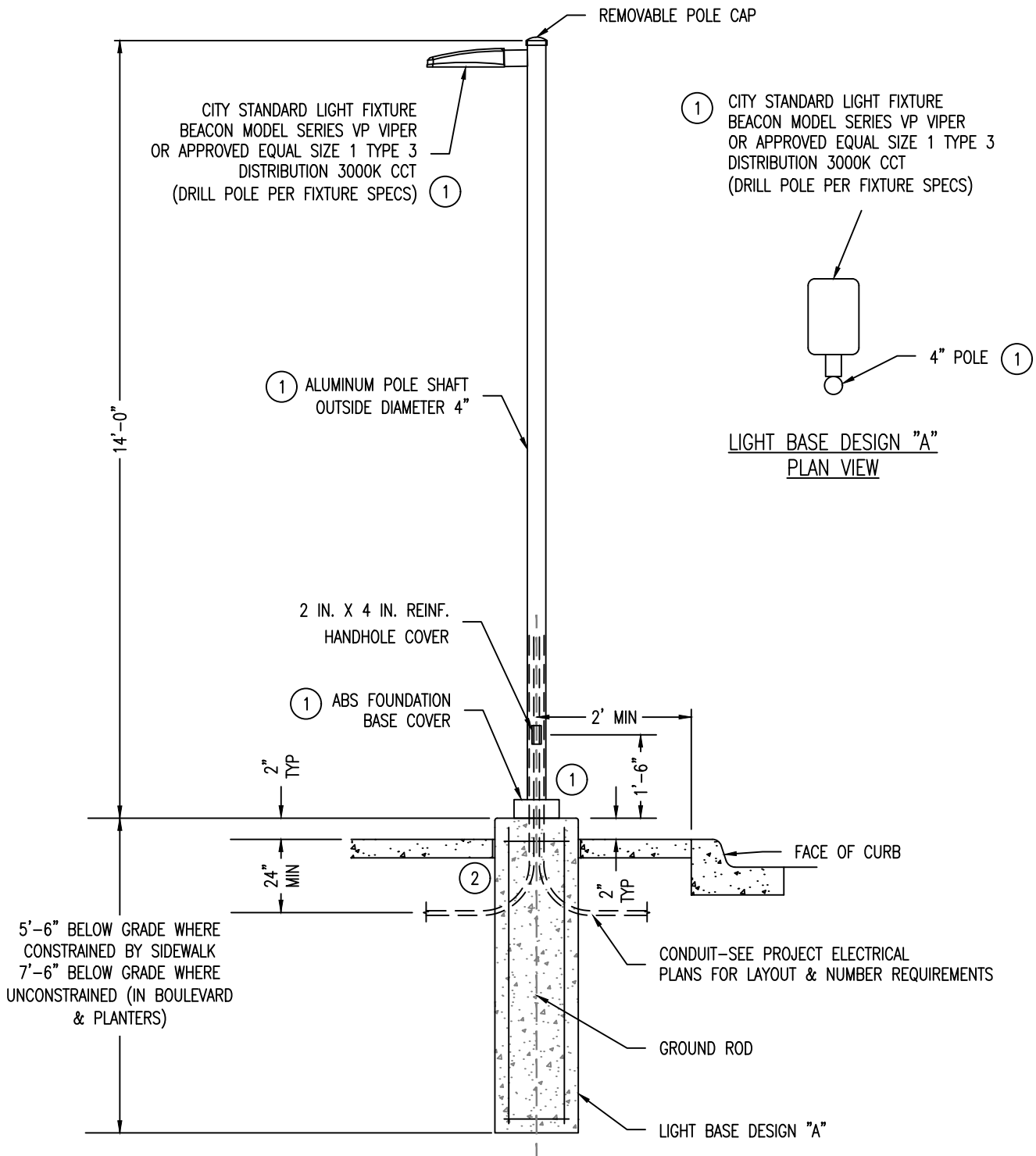
SEE SHEETS 1 AND 2 FOR BASE POST MOUNTING DETAIL.



**NOTES**

- (A) SHEET MATERIAL SHALL BE ACRYLIC OR VINYL NON-REFLECTIVE, AND ATTACHED TO POST WITH PLASTIC ZIP TIES (50 LB. TENSILE). ALL LETTERING SHALL BE RED, ON A WHITE BACKGROUND. SIGN SHALL READ "NO PARKING TOW-AWAY ZONE" IN 1.5" LETTERING. SIGN SHALL ALSO READ "ROCHESTER CODE OF ORDINANCES BY AUTHORITY OF SECTION 11-6-10" IN 1" LETTERING. SIGN SHALL HAVE "BEGIN" IN 2" LETTERING, FOLLOWED BY A CHANGEABLE DAY THE WEEK INSERT, ALSO IN 2" LETTERING.
- (B) STANDARD STEEL T-POST WITH WELDED PLATE SHALL BE A MINIMUM OF 1.26 LBS./FOOT.

DEPARTMENT OF PUBLIC WORKS CITY OF ROCHESTER, MINNESOTA <b>TEMPORARY "TOW-AWAY ZONE"          SIGN FOR CONSTRUCTION</b>			
 CITY ENGINEER			
SHT 1 OF 1 SHTS	DATE REVISED 4/15/20	PLATE NO. 8-03	REV. B



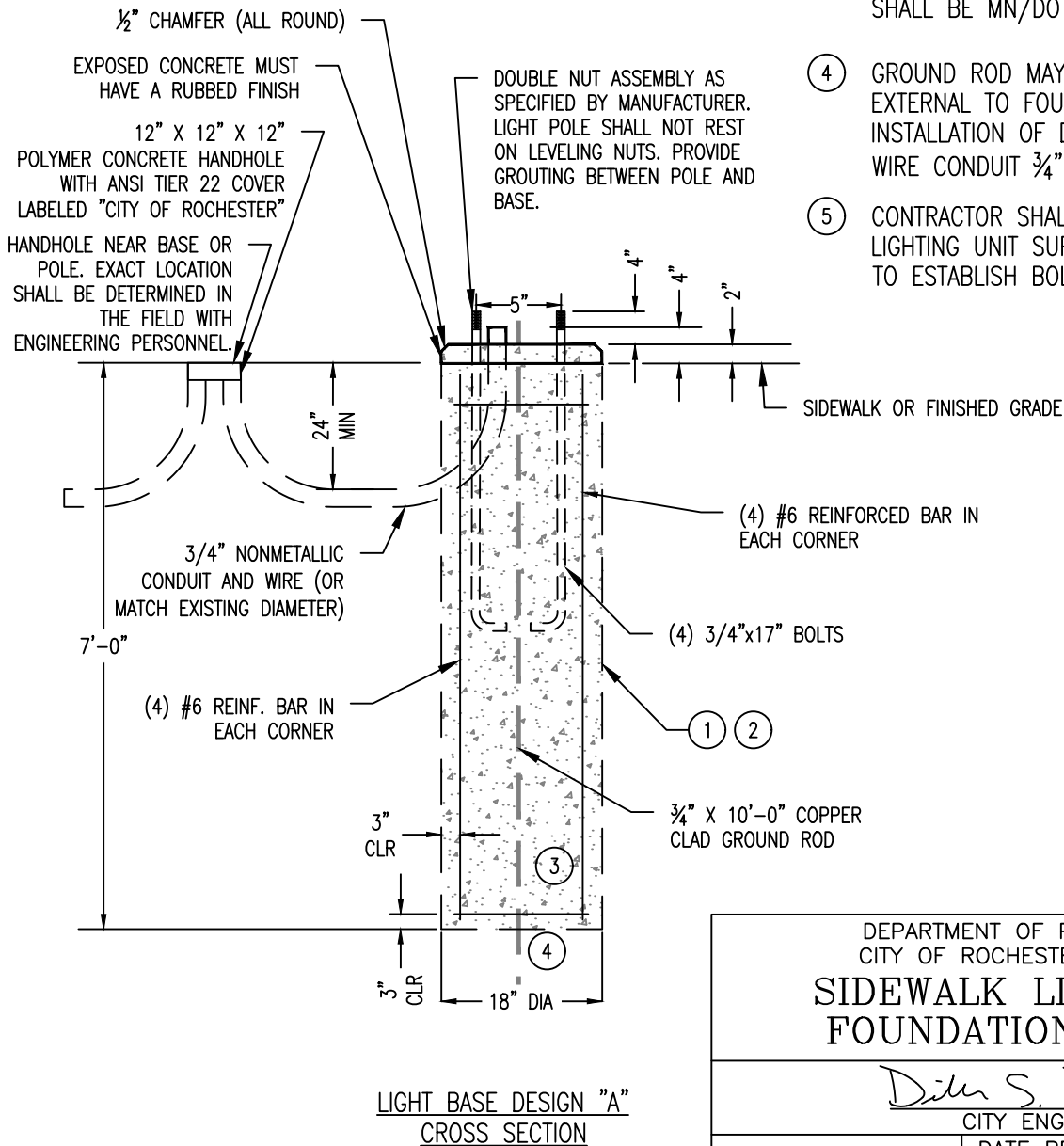
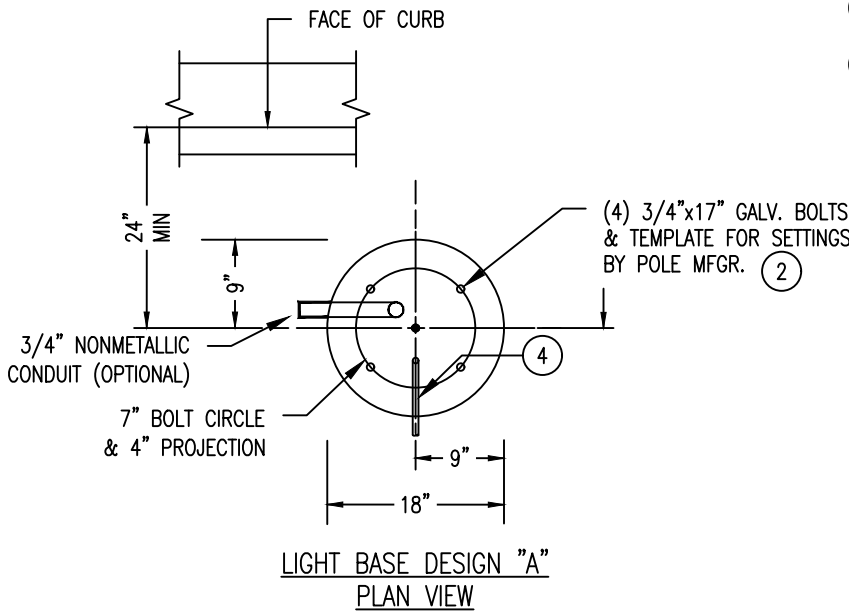
NOTES

- ① LUMINAIRE, POLE, AND COMPONENTS SHALL BE SUPPLIED WITH GLOSS BLACK SMOOTH FINISH
- ② SEE S.D.P. 2-10 FOR EXPANSION JOINT AROUND BASE
- 3. LUMINAIRE SHALL BE CITY STANDARD LIGHT FIXTURE BEACON MODEL SERIES VP VIPER OR APPROVED EQUAL SIZE 1 TYPE 3 DISTRIBUTION 3000K CCT:  
LUMENS - 7500  
CCT/CRI - 3000K, 70 CRI  
DISTRIBUTION - TYPE 3  
VOLTAGE - 120-277V  
MOUNT - ADJUSTABLE ARM (UNIVERSAL DRILL PATTERN)

DEPARTMENT OF PUBLIC WORKS CITY OF ROCHESTER, MINNESOTA <b>SIDEWALK LIGHT POLE          DETAILS</b>			
 CITY ENGINEER			
SHT 1 OF 2 SHTS	DATE REVISED 2/2/26	PLATE NO. 8-04	REV. C

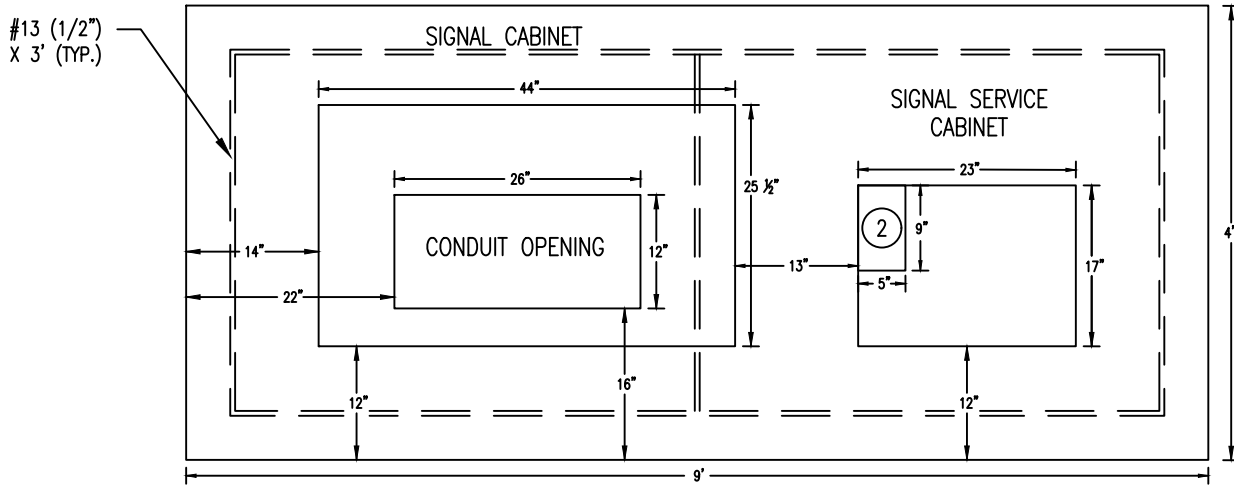
# NOTES

- ① NEW CAST IN PLACE CONCRETE LIGHT BASE
- ② AT EXISTING LIGHT BASE, RE-USE EXISTING ANCHORS IF CONDITION IS ADEQUATE AND LAYOUT IS CORRECT FOR NEW BASE. OTHERWISE, CUT ANCHORS FLUSH WITH CONCRETE AND COAT ANCHORS AND SURROUNDING CONCRETE WITH BRUSH APPLIED WATERPROOFING. INSTALL NEW STAINLESS STEEL ANCHOR RODS USING INJECTION ADHESIVE. EMBEDMENT DEPTH SHALL BE ADEQUATE TO DEVELOP THE FULL STRENGTH OF ANCHOR ROD, PER EPOXY MANUF. TABLES BUT NO LESS THAN 16". INSTALL NEW RODS A MINIMUM OF 4" FROM EXISTING ANCHOR LOCATIONS. CONTRACTOR SHALL COORDINATE ROTATED ANCHOR LAYOUT (IF REQUIRED) WITH LIGHTING SUPPLIER.
- ③ LIGHT POLE CONCRETE FOUNDATION SHALL BE MN/DOT SPEC. MIX 3G52
- ④ GROUND ROD MAY BE INSTALLED EXTERNAL TO FOUNDATION WITH INSTALLATION OF DEDICATED GROUND WIRE CONDUIT 3/4"
- ⑤ CONTRACTOR SHALL COORDINATE WITH LIGHTING UNIT SUPPLIER FOR TEMPLATE TO ESTABLISH BOLT LOCATIONS



DEPARTMENT OF PUBLIC WORKS CITY OF ROCHESTER, MINNESOTA <b>SIDEWALK LIGHT POLE          FOUNDATION DETAILS</b>			
 CITY ENGINEER			
SHT 2 OF 2 SHTS	DATE REVISED 2/2/26	PLATE NO. 8-04	REV. C

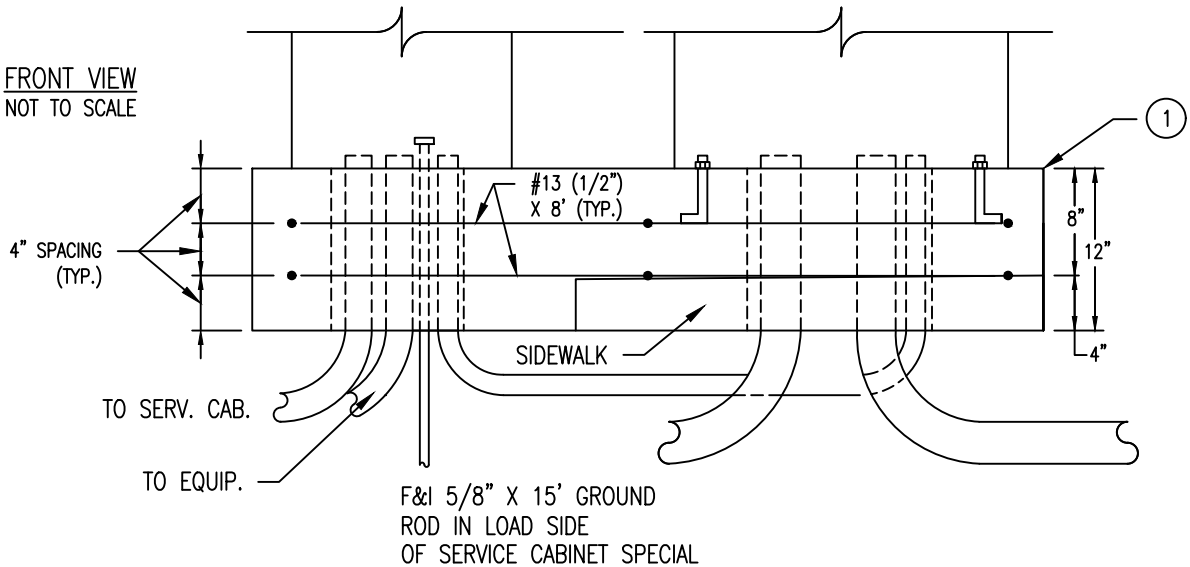
TOP VIEW  
NOT TO SCALE



POVOLNY SPECIALTIES  
SIGNAL SERVICE CABINET  
TYPE- HENNEPIN COUNTY  
BATTERY BACK UP

BRILLIANT P TYPE  
SIGNAL CABINET  
(TYP.)

FRONT VIEW  
NOT TO SCALE



① AFTER FOUNDATION AND CONDUITS ARE SET, FILL OPENING WITH SAND AND PLACE 1 INCH OF GROUT FLUSH WITH SURFACE OF FOUNDATION. GROUT SERVICE OPENING SHUT IF NOT USED.

② UTILITY ENTRANCE.

DEPARTMENT OF PUBLIC WORKS  
CITY OF ROCHESTER, MINNESOTA

SIGNAL PAD  
DETAIL

*Dylan S. Dahl*  
CITY ENGINEER

SHT 1 OF 1 SHTS	DATE REVISED 2/2/26	PLATE NO. 8-05	REV. A
-----------------	------------------------	-------------------	-----------