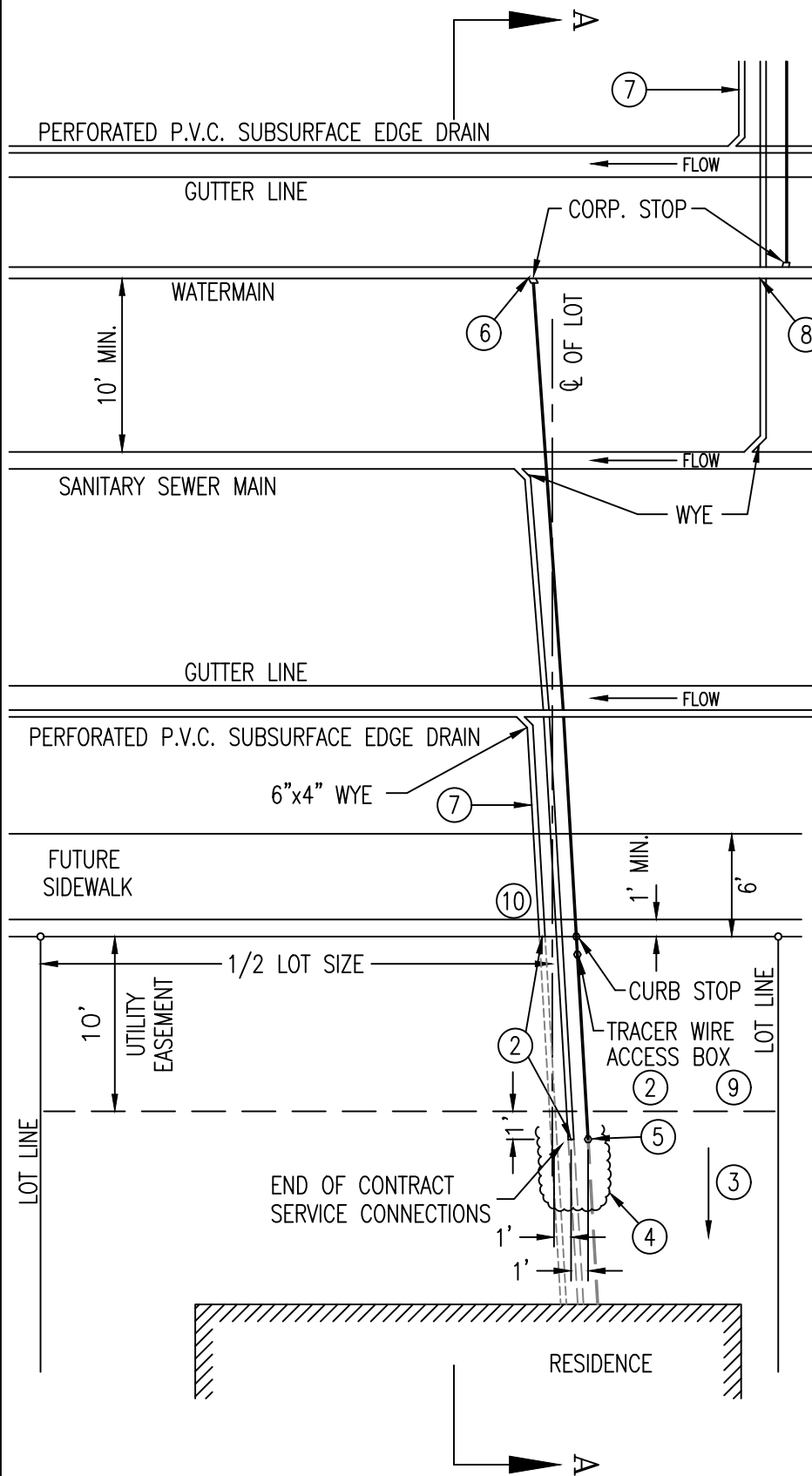
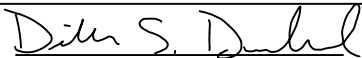


NOTES

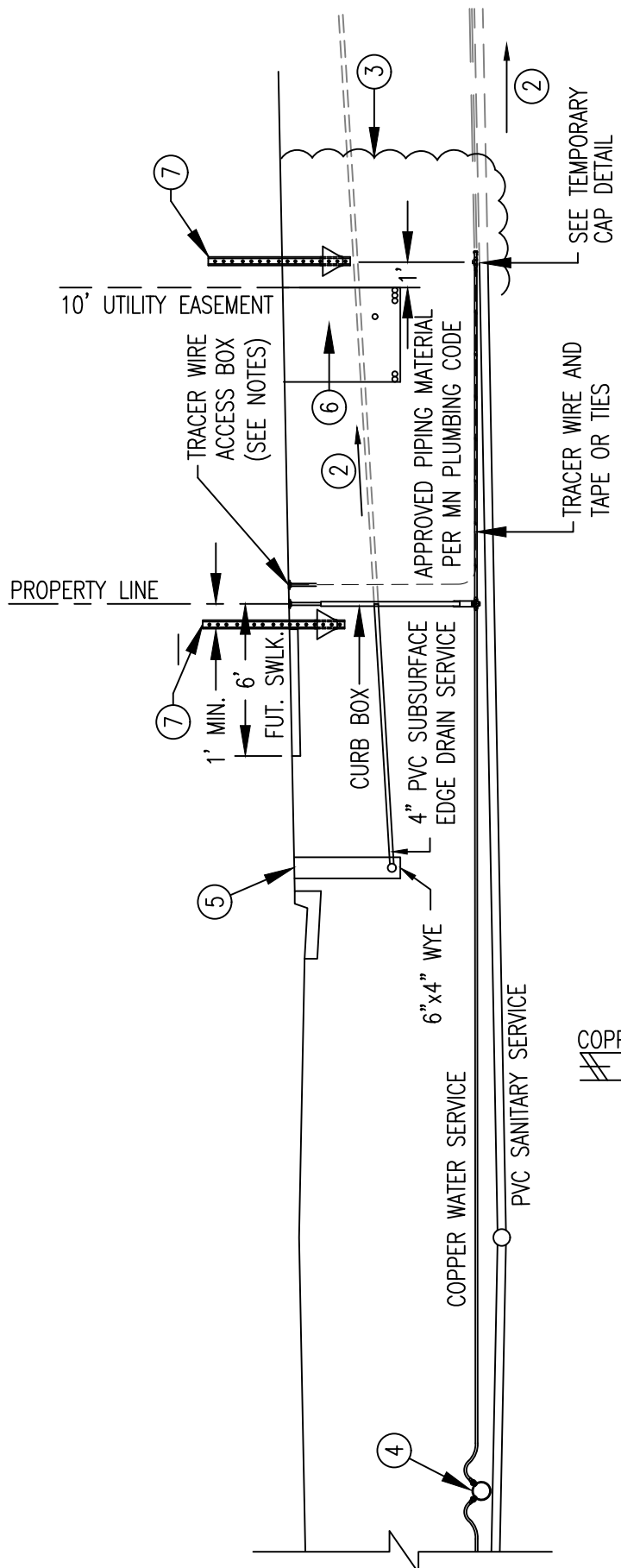
1. FINAL RECORD OF SERVICE LOCATIONS: END OF SEWER, WATER & SUBDRAIN SERVICES SHALL BE REFERRED TO LOT CORNER AND PROPERTY LINE. SHOW INVERT ELEVATION AND FINISHED GRADE OF SEWER AND UNDERGROUND SERVICES AND DISTANCE FROM LOT CORNER TO SEWER SERVICE. ALSO SHOW DIMENSIONS BETWEEN END OF SEWER SERVICE AND ENDS OF WATER AND UNDERGROUND DRAIN SERVICE.
2. PLUG END OF UNDERGROUND SERVICES. PLACE 4"x4" WOOD POST, EXTENDING ONE FOOT ABOVE GRADE.
3. FUTURE EXTENSION OF SERVICES BY OTHERS. REFER TO S.D.P 4-01 SHEET 3.
4. WHEN INSTALLED IN SOLID ROCK, BLAST 4' BEYOND END OF PIPE FOR FUTURE CONNECTION.
5. REFER TO S.D.P. 4-01 SHEET 2 FOR WATER SERVICE TEMPORARY CAP DETAIL.
6. REFER TO S.D.P. 6-11 FOR ADDITIONAL WATER SERVICE DETAIL.
7. REFER TO S.D.P. 1-08 FOR ADDITIONAL SUBSURFACE EDGE DRAIN DETAIL.
8. SEWER SERVICE CONNECTIONS ON SAME SIDE AS WATERMAIN SHOULD BE PLACED BELOW WATERMAIN.
9. FOR ALL NONMETALLIC PIPING MATERIALS, INSTALL TRACER WIRE AS REQUIRED BY MINNESOTA PLUMBING CODE. CONTRACTOR SHALL PROVIDE AND INSTALL TRACER WIRE, WIRE CONNECTORS, ACCESS BOX, AND COPPERHEAD SNAKEPIT BRACKET (OR APPROVED EQUAL) PER DETAIL AND ENGINEERING STANDARDS FOR SERVICE CONNECTIONS. 2' OF SLACK WIRE IS REQUIRED IN ALL ACCESS BOXES AFTER MEETING FINAL ELEVATION.
10. EXTEND SUBSURFACE EDGE DRAIN SERVICE TO PROPERTY LINE. 4" DIAMETER SOLID WALL PVC, SCHEDULE 40 REQUIRED IN COMMON TRENCH, SDR 35 OUTSIDE OF COMMON TRENCH, MINIMUM PIPE SLOPE OF 0.5%.
11. FOR ALL CURB STOPS INSTALLED WITHIN A PAVED AREA, REFER TO S.D.P. 1-10.



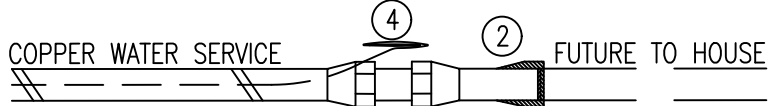
REPLACE PIPING MATERIAL IN KIND DURING SERVICE REPAIRS. MAINTAIN TRACER WIRE CONNECTIVITY USING APPROVED CONNECTORS FOR NONMETALLIC PIPING.

DEPARTMENT OF PUBLIC WORKS CITY OF ROCHESTER, MINNESOTA <h2 style="text-align: center;">SERVICE CONNECTIONS STUBBED INTO PROPERTY</h2>			
 CITY ENGINEER			
SHT 1 OF 3 SHTS	DATE REVISED 2/2/26	PLATE NO. 4-01	REV. L

NOTES



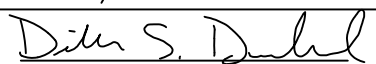
1. TO DETERMINE ELEVATION OF END OF SEWER SERVICE: USING TOP OF INSIDE OF MAIN AT WYE, BEGIN 2% GRADE (APPROX. 1/4" PER FT.) IF DEPTH OF INVERT AT END OF SERVICE IS GREATER THAN 8.5' BELOW FINISH BOULEVARD GRADE, INCREASE GRADIENT. FINAL DEPTH OF SEWER SERVICE LESS THAN 8' BELOW FINISH BOULEVARD GRADE SHALL BE REVIEWED AND APPROVED BY CITY ENGINEER.
2. FUTURE EXTENSION OF SERVICES BY OTHERS. REFER TO S.D.P. 4-01 SHEET 3.
3. WHEN INSTALLED IN SOLID ROCK, BLAST 4' BEYOND END OF PIPE FOR FUTURE CONNECTION.
4. REFER TO S.D.P. 6-11 FOR ADDITIONAL WATER SERVICE DETAIL.
5. REFER TO S.D.P. 1-08 FOR ADDITIONAL SUBSURFACE EDGE DRAIN DETAIL.
6. REFER TO S.D.P. 4-03 FOR ADDITIONAL UTILITY SERVICE DETAIL.
7. INSTALL EITHER 4"x4" WOOD POST OR METAL SIGN POST MIN. ONE FOOT ABOVE GRADE TO MARK AND PROTECT LOCATION.
8. FOR ALL NONMETALLIC PIPING MATERIALS, INSTALL TRACER WIRE AS REQUIRED BY MINNESOTA PLUMBING CODE. CONTRACTOR SHALL PROVIDE AND INSTALL TRACER WIRE, WIRE CONNECTORS, ACCESS BOX, AND COPPERHEAD SNAKEPIT BRACKET (OR APPROVED EQUAL) PER DETAIL AND ENGINEERING STANDARDS FOR SERVICE CONNECTIONS.
2' OF SLACK WIRE IS REQUIRED IN ALL ACCESS BOXES AFTER MEETING FINAL ELEVATION.
9. FOR ALL CURB STOPS INSTALLED WITHIN A PAVED AREA, REFER TO S.D.P. 1-10.
10. THE SLOPE OF THE UTILITY EASEMENT TO NOT EXCEED 7% UNLESS APPROVED BY THE CITY ENGINEER.

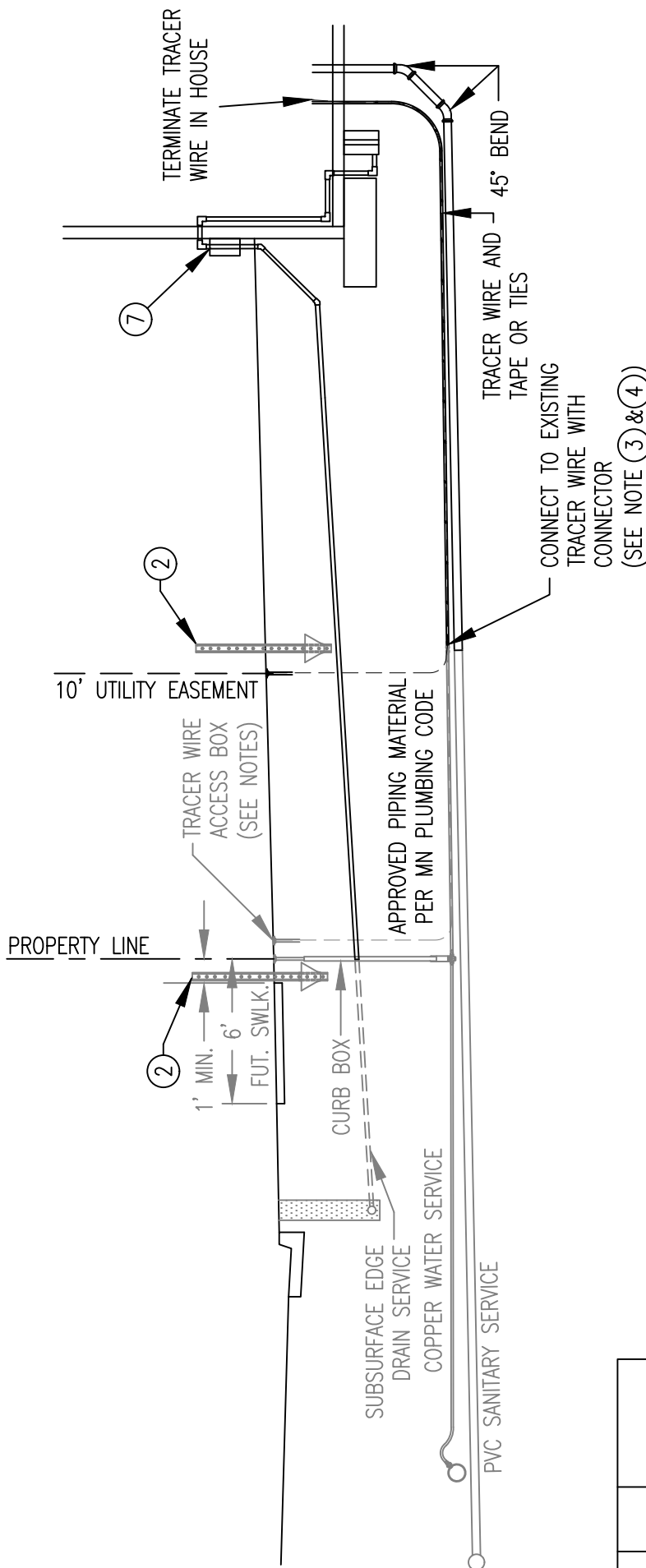


TEMPORARY CAP DETAIL

1. INSTALL COMPRESSION COUPLER AND CAP. TEST MAIN WITH CURB STOP IN OPEN POSITION.
2. TEMPORARY CAP ASSEMBLY CONSISTS OF PUSH TO CONNECT OR SOLDER BUSHING, COPPER DISC, AND 3" COPPER TUBE.
3. REMOVE TEMPORARY CAP AND CONNECT INTO COUPLER WHEN HOUSE CONNECTION IS MADE.
4. CONNECT TO EXISTING TRACER WIRE WITH APPROVED CONNECTOR DURING SERVICE INSTALLATION OF NONMETALLIC PIPING.

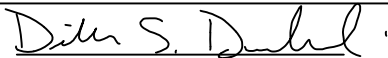
REPLACE PIPING MATERIAL IN KIND DURING SERVICE REPAIRS. MAINTAIN TRACER WIRE CONNECTIVITY USING APPROVED CONNECTORS FOR NONMETALLIC PIPING.

DEPARTMENT OF PUBLIC WORKS CITY OF ROCHESTER, MINNESOTA SECTION A-A WORK INSIDE R/W & EASEMENT			
 CITY ENGINEER			
SHT 2 OF 3 SHTS	DATE REVISED 2/2/26	PLATE NO. 4-01	REV. L



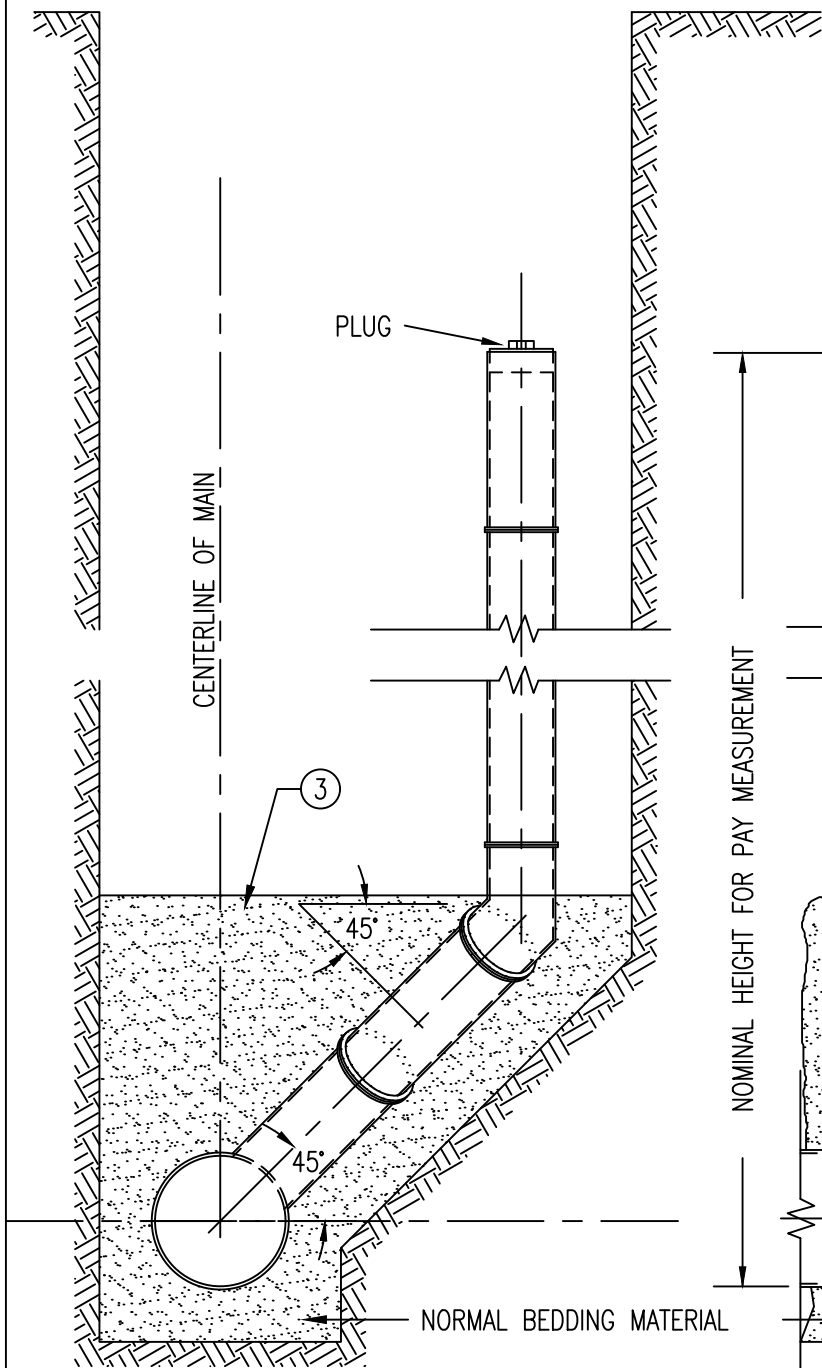
NOTES

1. TO DETERMINE ELEVATION OF END OF SEWER SERVICE: USING TOP OF INSIDE OF MAIN AT WYE, BEGIN 2% GRADE (APPROX. 1/4" PER FT.) IF DEPTH OF INVERT AT END OF SERVICE IS GREATER THAN 8.5' BELOW FINISH BOULEVARD GRADE, INCREASE GRADIENT. FINAL DEPTH OF SEWER SERVICE LESS THAN 8' BELOW FINISH BOULEVARD GRADE SHALL BE REVIEWED AND APPROVED BY CITY ENGINEER.
2. REMOVE 4"x4" WOOD POST OR METAL SIGN
3. WHEN CONNECTING NONMETALLIC PIPING MATERIAL TO AN EXISTING COPPER STUB, INSTALL TRACER WIRE AS REQUIRED BY MINNESOTA PLUMBING CODE. CONTRACTOR SHALL PROVIDE AND INSTALL TRACER WIRE AND ACCESS BOX. ACCESS BOX MAY BE INSTALLED AT THE CONNECTION POINT OR AT THE EXISTING CURB STOP FOR EXISTING STUBS. ACCESS BOX AND TRACER WIRE SHALL BE INSTALLED AT THE CURB STOP FOR ALL FUTURE CONNECTIONS.
2' OF SLACK WIRE IS REQUIRED IN ALL ACCESS BOXES AFTER MEETING FINAL ELEVATION.
4. WHEN CONNECTING A NONMETALLIC PIPING MATERIAL TO A LIKE MATERIAL, THE CONTRACTOR SHALL CONNECT TO THE EXISTING TRACER WIRE WITH AN APPROVED CONNECTOR. A MINIMUM OF 2' OF SLACK WIRE IS REQUIRED IN ALL ACCESS BOXES AFTER MEETING FINAL GRADE.
5. REPLACE PIPING MATERIAL IN KIND DURING SERVICE REPAIRS. MAINTAIN TRACER WIRE CONNECTIVITY USING APPROVED CONNECTORS FOR NONMETALLIC PIPING.
6. REPLACEMENT OF AN EXISTING METALLIC WATER SERVICE WITH NONMETALLIC PIPING SHALL NOT BE PERFORMED UNLESS A REPLACEMENT ELECTRICAL GROUNDING SYSTEM HAS BEEN INSTALLED, INSPECTED, AND APPROVED BY THE ELECTRICAL INSPECTOR.
7. AIR GAP REQUIRED BETWEEN SUMP PUMP AND GRAVITY SUBSURFACE EDGE DRAIN SERVICE.

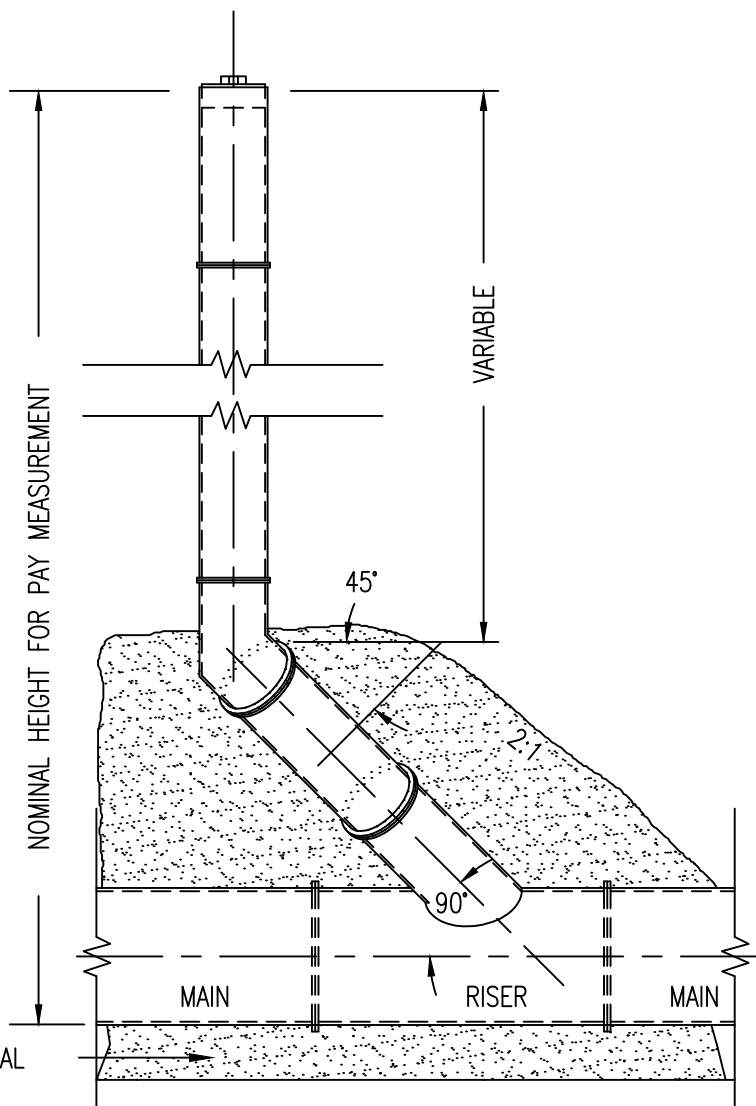
DEPARTMENT OF PUBLIC WORKS CITY OF ROCHESTER, MINNESOTA SECTION A-A WORK OUTSIDE R/W & EASEMENT			
 CITY ENGINEER			
SHT 3 OF 3 SHTS	DATE REVISED 2/2/26	PLATE NO. 4-01	REV. L

NOTES

1. THE BID PRICE TO CONSTRUCT RISER SHALL INCLUDE ALL COSTS AND MATERIALS FOR D.I.P. TEE BRANCH IN MAIN, BEND, RISER PIPE, MORTAR, AND INSTALLATION.
2. DUCTILE IRON PIPE SHALL BE USED FOR RISER CONSTRUCTION 3' OR GREATER. PVC RISER WITH CONCRETE ENCASED WYE SHALL BE USED BETWEEN 0 - 3'.
- ③ FURNISH AND COMPACT BEDDING MATERIAL TO COMPLETELY FILL TRENCH TO THE DEPTH OF THE 45° BEND AS SHOWN.



END ELEVATION



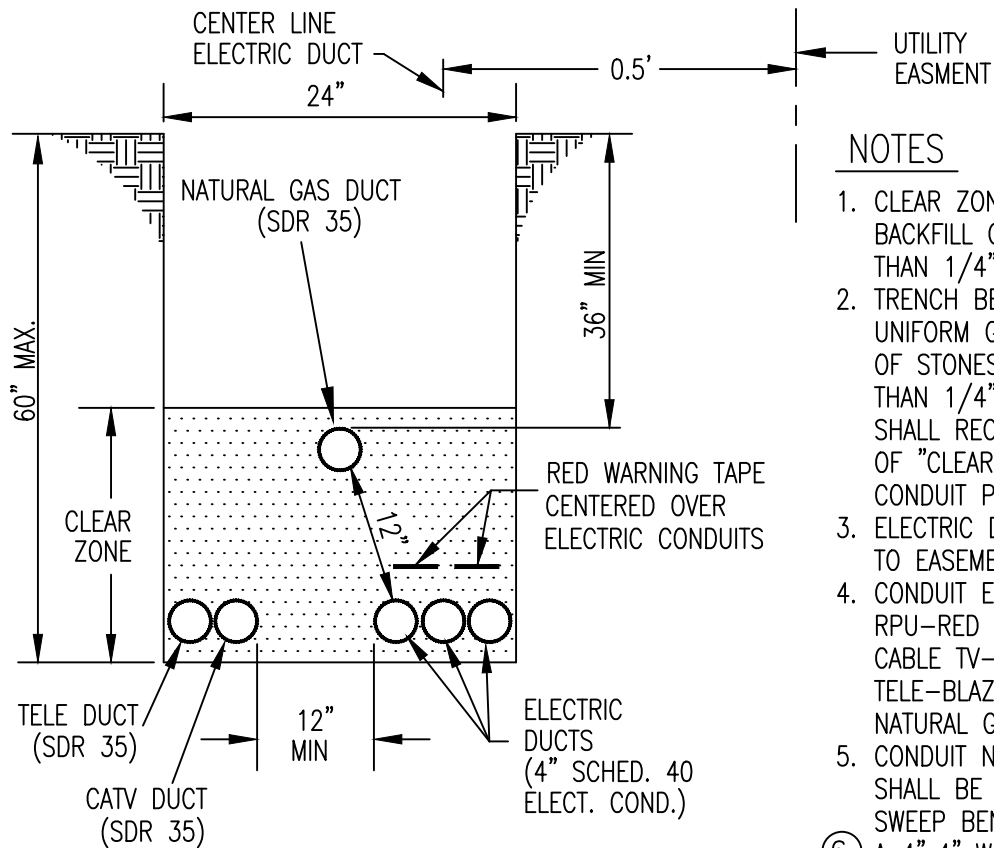
SIDE ELEVATION

DEPARTMENT OF PUBLIC WORKS
CITY OF ROCHESTER, MINNESOTA

STANDARD 4IN. RISER

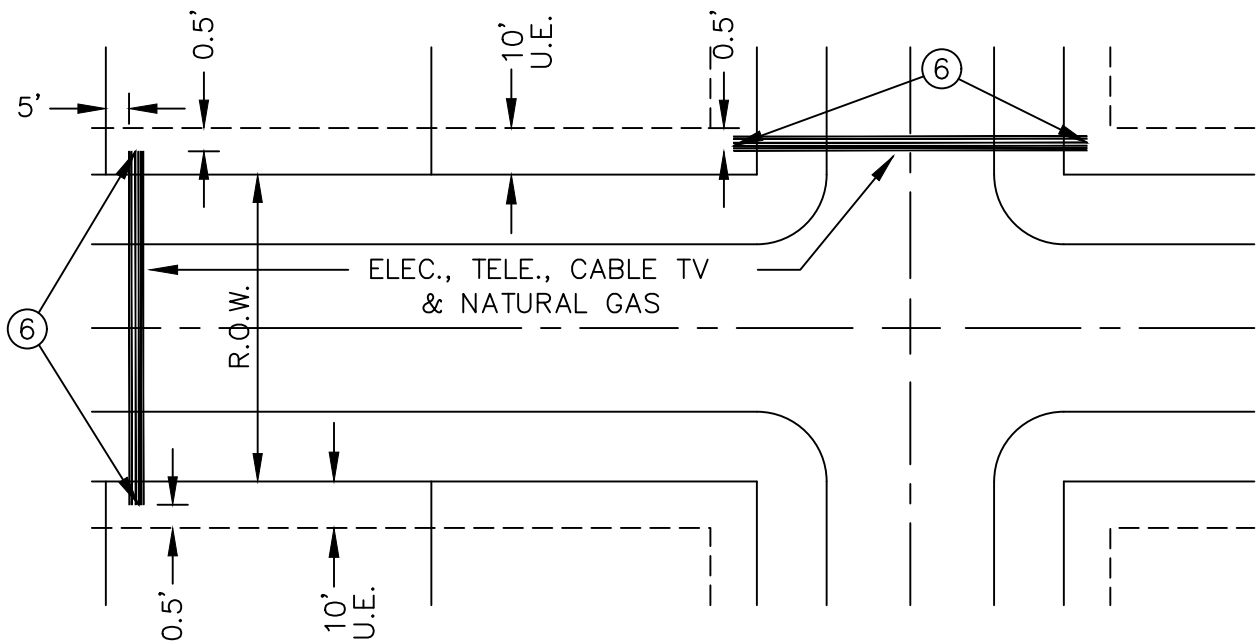
Dylan S. Dahl
CITY ENGINEER

SHT 1 OF 1 SHTS	DATE REVISED 2/2/26	PLATE NO. 4-02	REV. E
-----------------	------------------------	-------------------	-----------



NOTES

1. CLEAR ZONE SHALL NOT CONTAIN BACKFILL GRANULAR MATERIAL LARGER THAN 1/4" IN DIAMETER.
2. TRENCH BED SHALL BE OF A SMOOTH, UNIFORM GRADE, COMPACTED, AND FREE OF STONES OR PROTRUSIONS LARGER THAN 1/4". UNSUITABLE TRENCH BEDS SHALL RECEIVE A 2" COMPACTED LAYER OF "CLEAR ZONE" BACKFILL PRIOR TO CONDUIT PLACEMENT.
3. ELECTRIC DUCT TO BE NEAREST DUCT TO EASEMENT LINE.
4. CONDUIT END CAP COLORS ARE:
RPU-RED
CABLE TV-PINK
TELE-BLAZE ORANGE
NATURAL GAS-YELLOW
5. CONDUIT NEEDING SURFACE ACCESS SHALL BE DONE SO BY USING LONG SWEEP BENDS.
- ⑥ A 4"x4" WOODEN POST, EXTENDING ONE FOOT ABOVE GRADE, SHALL BE PLACED BY THE UTILITY CROSSING CONDUITS TO MARK THEIR LOCATION.



DEPARTMENT OF PUBLIC WORKS CITY OF ROCHESTER, MINNESOTA STREET CROSSINGS FOR UTILITY CONDUITS			
 CITY ENGINEER			
SHT 1 OF 1 SHTS	DATE REVISED 2/2/26	PLATE NO. 4-03	REV. E